



Green Lanes, N16

£675,000

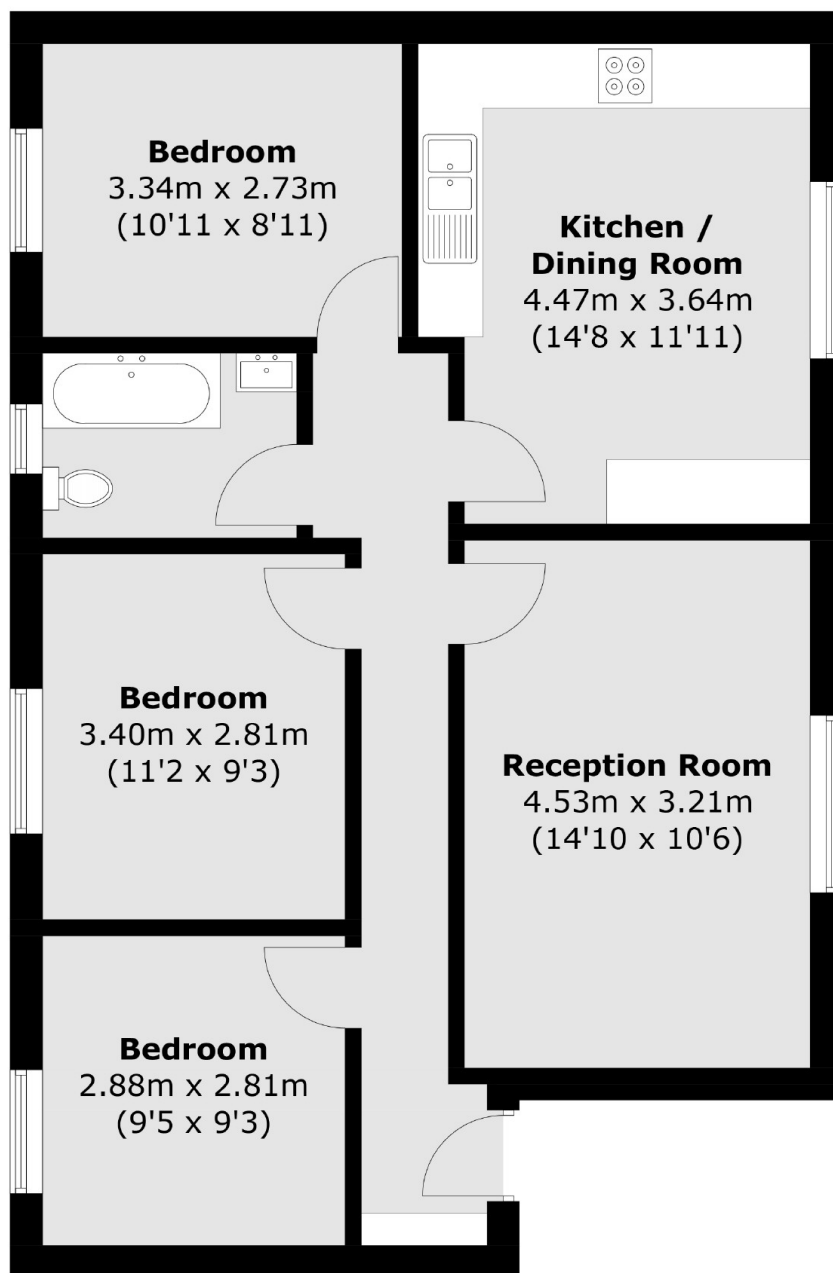
A recently renovated, three bedroom flat on the raised ground floor of a period conversion. This home has modern finishes throughout with a period touch by the way of hard wood floors and sash windows.

Set between bustling Newington Green and the vast green space of Clissold Park, you are ideally located for eateries and relaxing walks alike. For transport, there are numerous bus links take you into the The City and the West End from Newington Green and Canonbury Overground station is just a half mile walk away.

Features

Three Bedrooms
Separate Kitchen
Private Entrance
Lateral
Recently Renovated

Green Lanes, London, N16



Total area (approx.): 74.9 sq. m (806.2 sq. ft)