

## Rufford Street, N1

£725,000

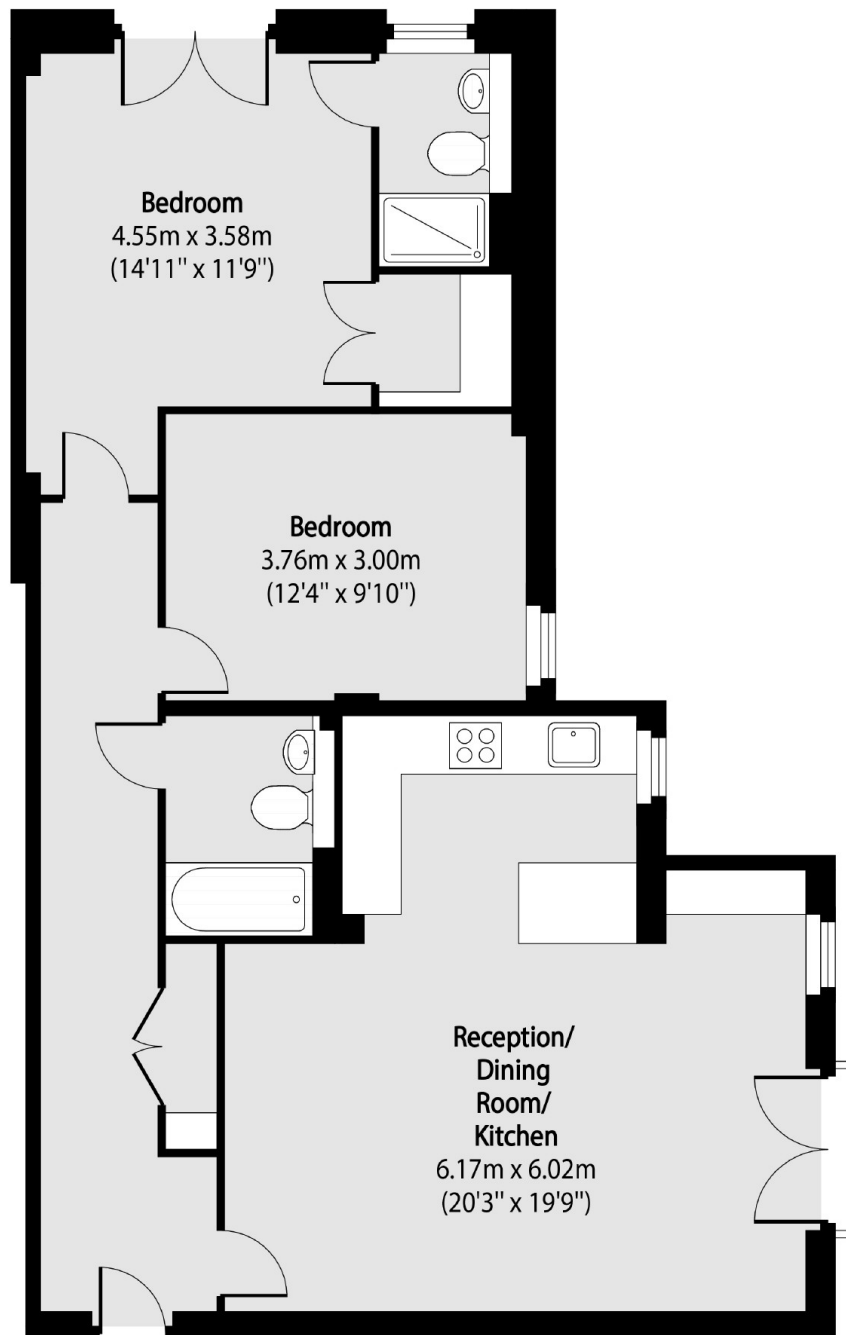
This spacious two bedroom property benefits from high ceilings, great light and hard wood floors throughout. The space is set over one level offering good proportions. The large living room space offers flexibility for entertaining, dining and working from home. The modern fitted kitchen has contemporary units and integrated appliances. Rufford Street Mews is a gated, secure, private development within a one mile radius of Kings Cross providing easy access to the City.

This development is positioned off York Way and it is a short walk to London's central transport hub at King's Cross and St. Pancras International. The amenities of Granary Square and Coal Drops Yard are a 5 minute walk. Upper Street with its many shops, bars and restaurants is a 20 minute walk.

### Features

- Gated Mews
- Two Bedrooms
- Two Bathrooms
- Open Plan
- Balcony

# Rufford Street, London, N1



Total area (approx): 81.29 sq m (875 sq. ft)