



Nevill Road, N16

£575,000

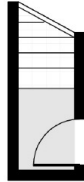
This two bedroom, two bathroom split-level apartment has been recently refurbished to a high standard. The first floor features two bedrooms, a shower room and a bathroom. On the top floor is the kitchen and living space with modern appliances. The living room is generously sized with herringbone flooring, eaves storage and large windows.

Nevill Road is well located between Clissold Park, Newington Green & Stoke Newington. It benefits from convenient transport links into the City and Central London with Rectory Road station (Overground) only a short distance away.

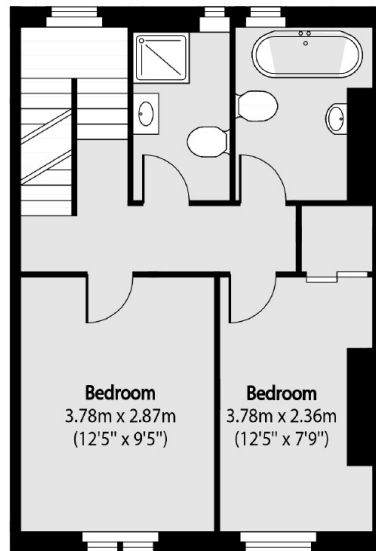
Features

Two Bedrooms
Two Bathrooms
Top Floor
Transport Links
Chain Free

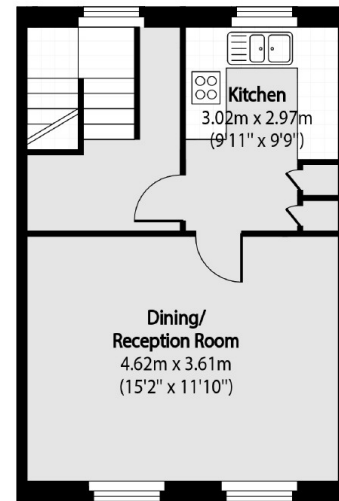
Nevill Road, London, N16



Ground Floor



First Floor



Second Floor

Total area (approx): 73.02 sq m (786 sq. ft)