



Drummond Way, N1

£2,200 Per week

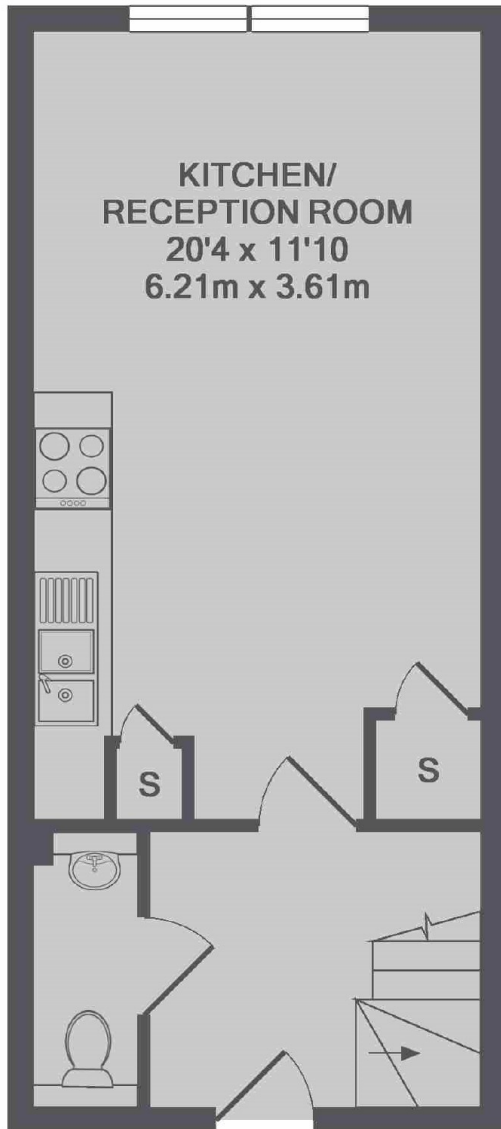
A one bedroom split level apartment in a period conversion with concierge and resident gardens. It has been finished to an excellent standard throughout with dark wood flooring, Italian designer kitchen and modern bathroom.

Drummond Way is just over a quarter mile from Highbury & Islington station as well as being moments from Upper Street which offers a superb range of shops, bars and restaurants.

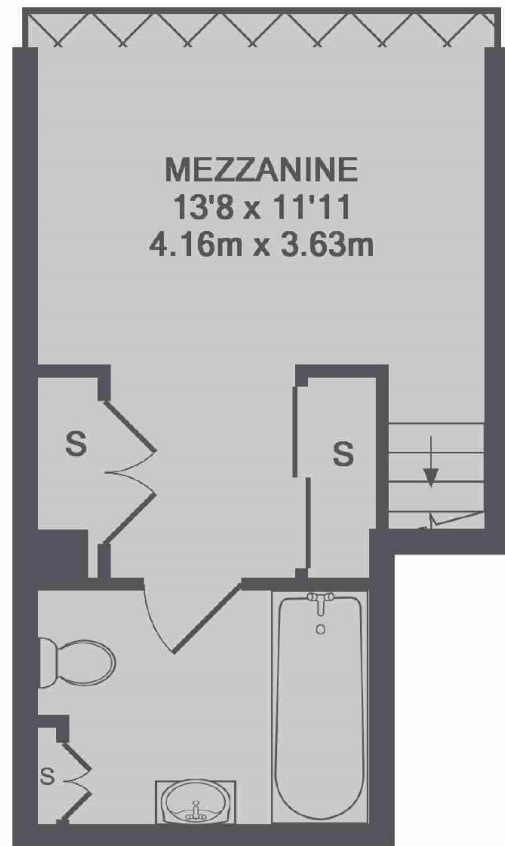
Features

- One Bedroom
- 24 Hour Concierge
- Double Height Windows
- Modern Finish Throughout
- Period Conversion
- Additional WC

Drummond Way, London, N1



GROUND FLOOR



1ST FLOOR

TOTAL APPROX. FLOOR AREA 549 SQ.FT. (51.0 SQ.M.)