



Ecclesbourne Road, N1

£575,000

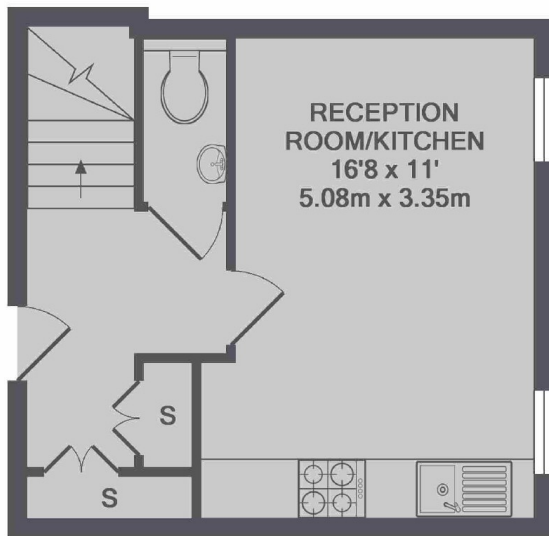
A wonderful one bedroom apartment set over two levels within a school conversion in a private gated development. It has a living room with large feature windows and wooden floors, modern kitchen and fitted wardrobes.

Ecclesbourne Apartments is just off Essex Road close to Angel and Old Street tube stations and the shops, restaurants and amenities along Upper Street.

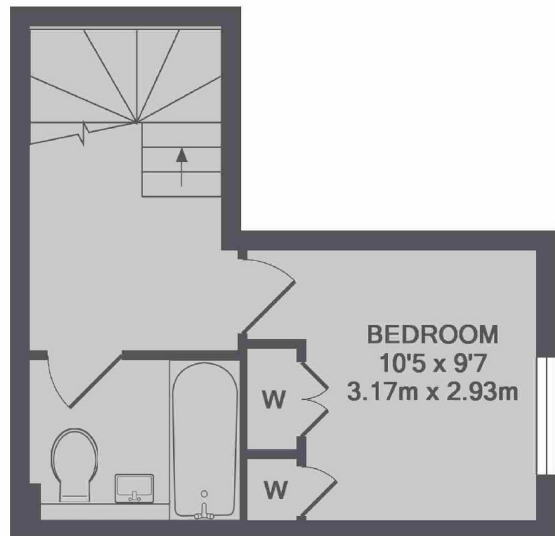
Features

- School Conversion
- Split Level
- Private Gated Development
- Wooden Flooring
- Fitted Storage
- Close to Essex Road

Ecclesbourne Road, London, N1



GROUND FLOOR



1ST FLOOR

TOTAL APPROX. FLOOR AREA 511 SQ.FT. (47.4 SQ.M.)