



Essex Road, N1

£1,250,000

A fantastic three bedroom, top floor split level flat that has been recently renovated on the popular Essex Road. The apartment features a south facing private terrace, open plan kitchen and living space.

Essex Road has fantastic transport links in close proximity to Angel Underground (Northern Line), Essex Road Train Line and Highbury & Islington Underground (Victoria Line). The property is located on a very popular street within the heart of Islington; featuring multiple retail shops, cafés & restaurants.

Features

- Freehold
- Three Bedroom
- Private Terrace
- Split Level
- Period Conversion
- In-built Speaker System



Essex Road, N1

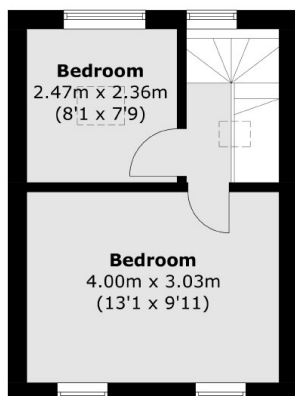
As you enter the property, there is a spacious hallway with plenty of storage. The staircase leads you upstairs to a large open-plan living and kitchen area. The bright reception room features sound proofing throughout, a projector screen & the latest kitchen technology.

On the second floor, there is a large modern shower room with views from a large south-facing private terrace overlooking London. This floor also has a spacious double bedroom with built-in storage.

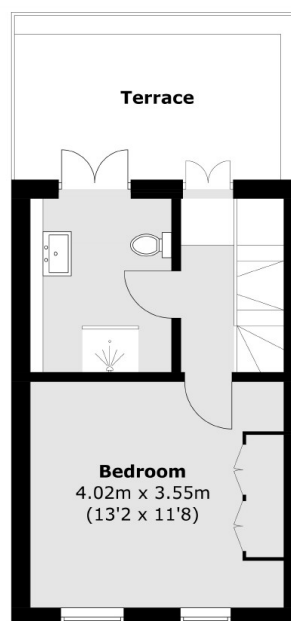
Leading on to the top floor you'll find two additional bedrooms including the principle bedroom, flooded with natural light from two large windows.



Essex Road, London, N1



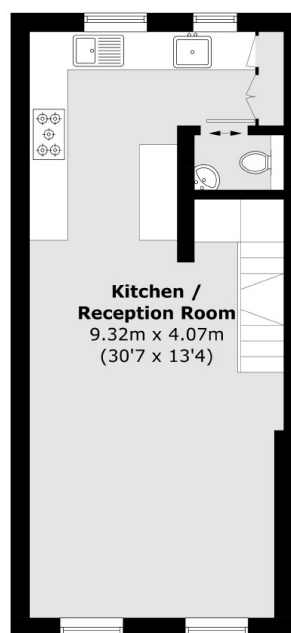
Third Floor



Second Floor



Ground Floor



First Floor

Total area (approx.): 91 sq. m (979.5 sq. ft)
Terrace area (approx.): 11.8 sq. m (127.0 sq. ft)