



Rufford Street, N1

£1,000,000

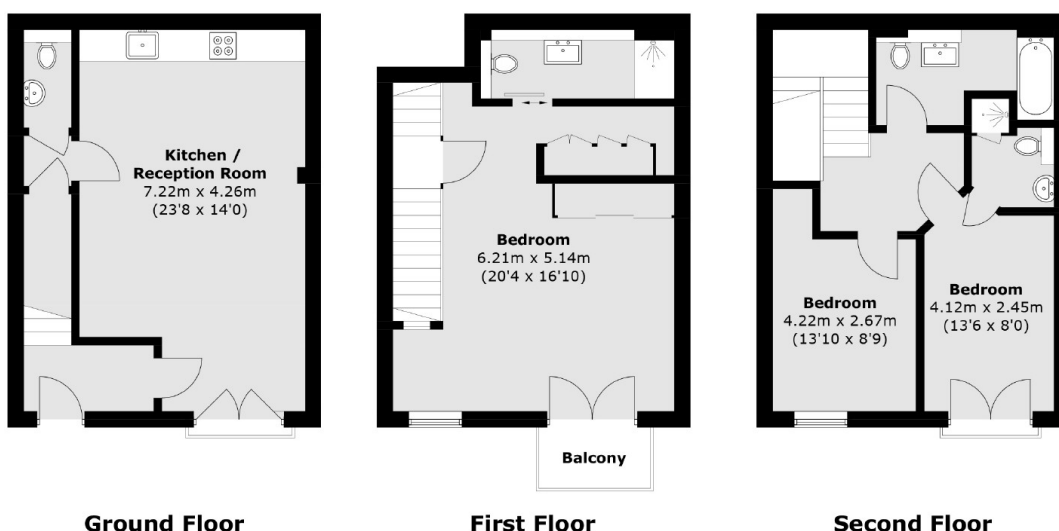
A three double bedroom, three bathroom mews house split across three storey's in a private gated development. The property benefits from an open plan kitchen/living and dining room, as well as a large principle suit and off-street parking.

The restaurants, bars and cafes of the new Granary Square are just over half a mile away, and for transport links Kings Cross is less than a miles walk.

Features

- Three Bedrooms
- Three Bathrooms
- Share of Freehold
- Parking
- Open Plan
- Chain Free

Rufford Street, London, N1



Ground Floor

First Floor

Second Floor

Total area (approx.): 113.7 sq. m (1,223.8 sq. ft)
Balcony (approx.): 2.4 sq. m (25.8 sq. ft)