



## Milner Square, N1

£499,999

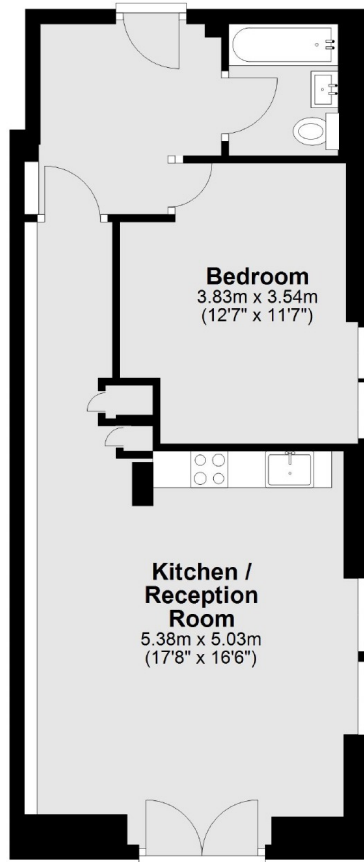
This spacious one bedroom apartment is located in this highly sought after gated development on Milner Square. This flat comes with modern open plan living, an allocated gated car parking space, patio garden and on site porter.

Upper Street is home to an plethora of independent cafes, restaurants and bars, with the internationally renowned Almeida Theatre a few minutes walk away. Highbury & Islington Station and Angel Underground are within half a mile offering excellent connections to the city and westend alike.

### Features

- Long Lease
- Allocated Parking Space
- On Site Porter
- Open Plan Living
- Patio Garden
- Gated Development

# Milner Square, London, N1



Total area: approx. 50.6 sq. metres (544.7 sq. feet)