



Spa Green Estate, EC1R

£550,000

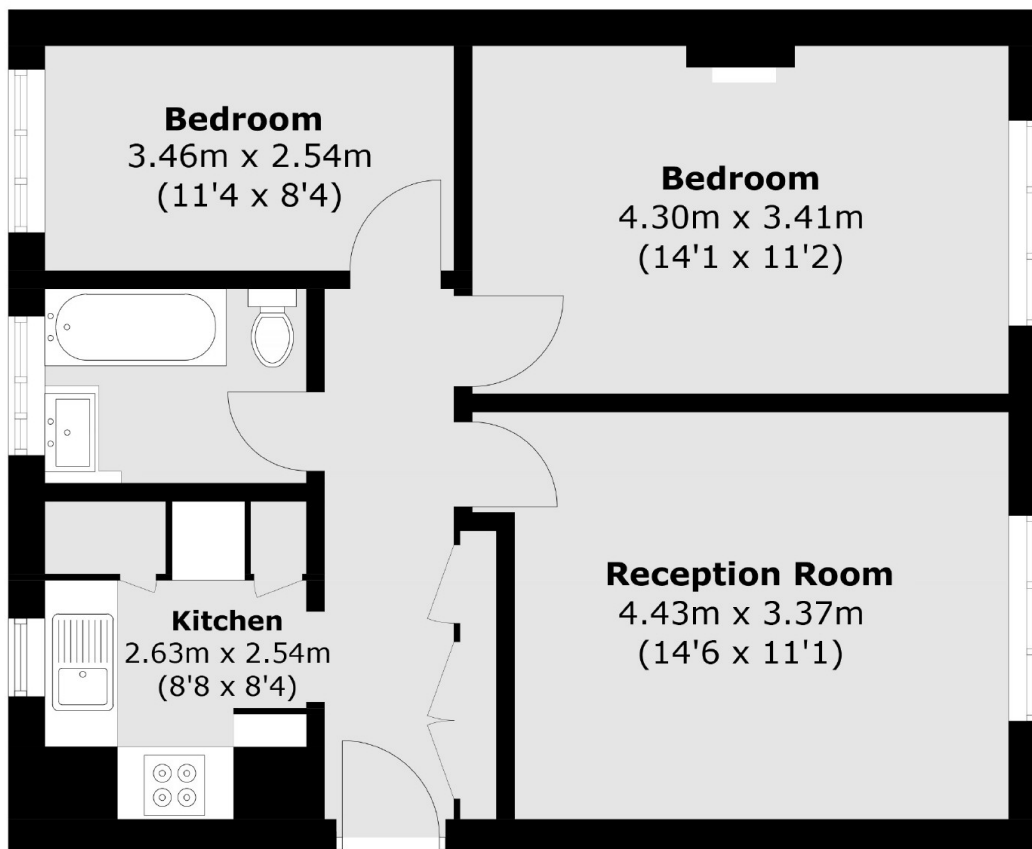
A two bedroom apartment in the award winning Clerkenwell area. This property has a unique private entrance and is in a lovely modern condition throughout. In 1998 this work by the architect Berthold Lubetkin received a Grade II* listing for its architectural significance and in 2008 was restored to its original colour scheme.

Superbly located on Rosebery Avenue which features close proximity to transport links such as Angel Station at 0.2 miles away and 0.9 miles to Kings Cross Station as well as Exmouth Market and Saddlers Wells Theatre on the door step.

Features

- Private Entrance
- Grade II* Listed Building
- Two Double Bedrooms
- One Bathroom
- Resident- Elected Management
- Ground Floor

Spa Green Estate, London, EC1R



Total area (approx.): 51.1 sq. m (550 sq. ft)