



**Allen Road, N16**

**£1,400,000**

**Dexters**



## Allen Road, N16

This charming end of terrace Victorian house is set over four floors. With three double bedrooms and two bathrooms this property features open plan kitchen & living, well proportioned garden and a south facing roof terrace.

As you enter the property you are met with a generous kitchen and open plan dining area with an abundance of built in storage. Following the stairs up is a bathroom on the half level.

Going on to the upper ground floor is a delightful double reception room with high ceilings and large windows providing ample natural light. The room also features hardwood floors and two marble fireplaces.

The second floor has two comparable double bedroom once again with large windows and good natural light. This then leads up to the master on the top floor, featuring an en-suite bathroom and a large south facing roof terrace

Ideally located in between Clissold Park, Newington Green and Stoke Newington Church Street this house benefits from the plethora of restaurants, cafés & boutique shops in the area. Being within a mile of Canonbury Overground station and having multiple bus routes close by means that there are numerous ways to get to the City, the West End and beyond.

### Features

- Victorian End of Terrace
- Three Bedrooms
- Two Bathrooms
- Period Features
- Freehold
- South Facing Roof Terrace





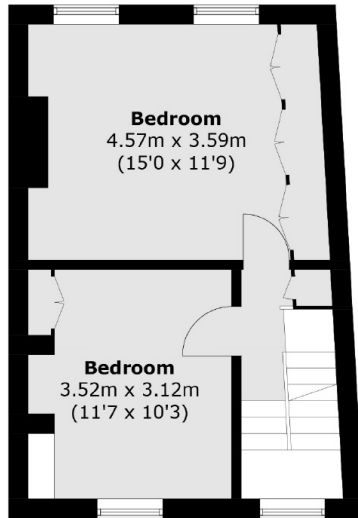




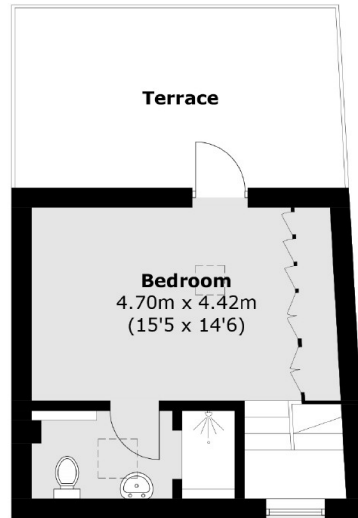




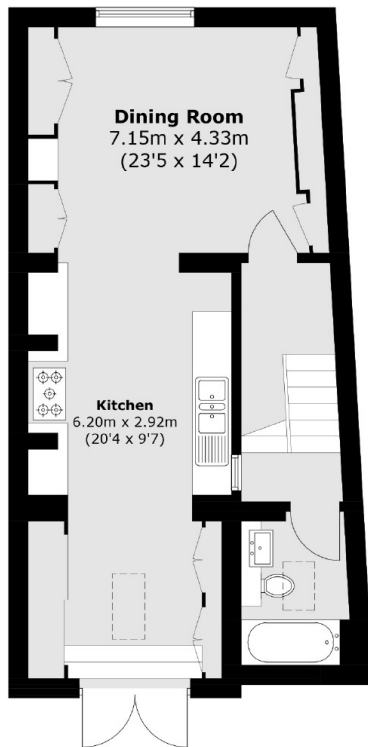
# Allen Road, London, N16



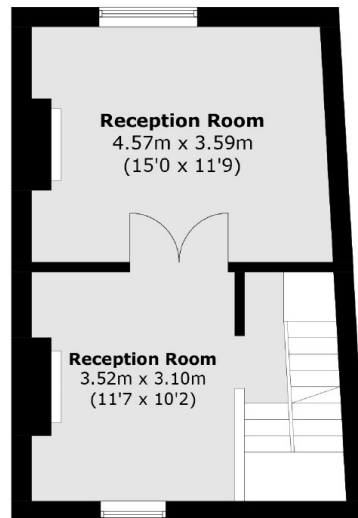
**Second Floor**



**Third Floor**



**Ground Floor**



**First Floor**

Total area (approx.): 134.1 sq. m (1,443.3 sq. ft)  
Terrace (approx.): 13.6 sq. m (146.4 sq. ft)