



## Rona Walk, N1

£500,000

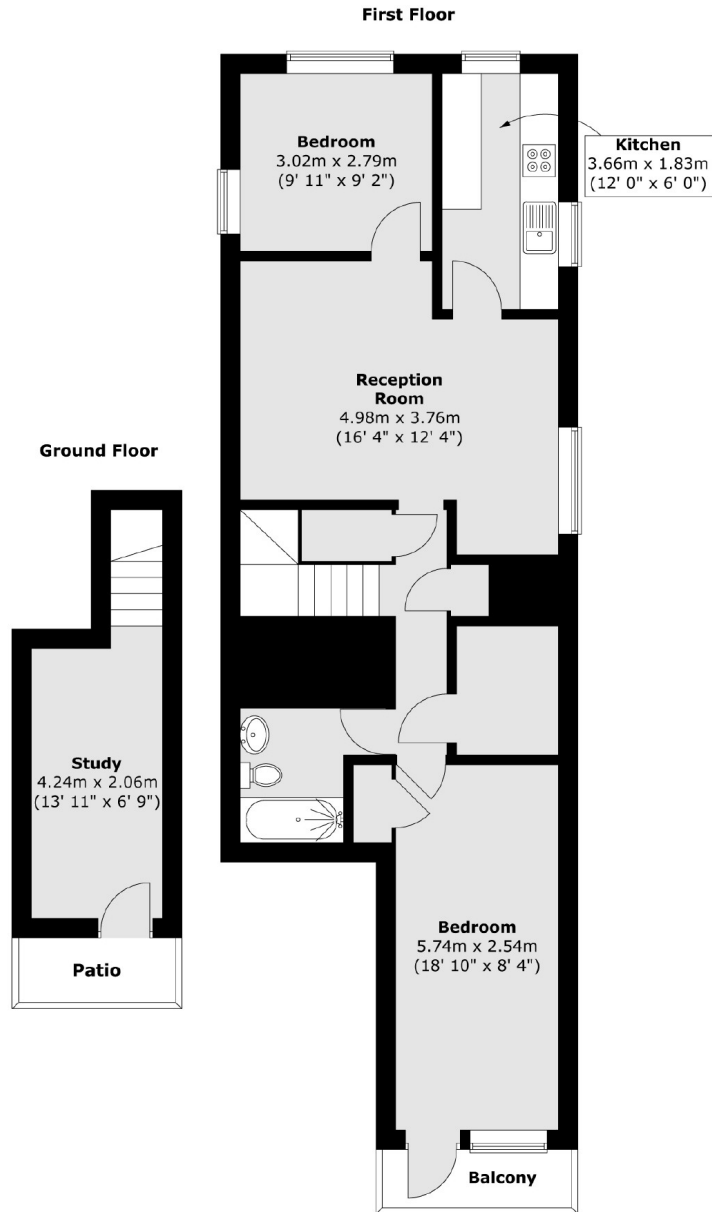
A spacious maisonette apartment has two double bedrooms, ample storage and balcony views of neighbourhood green spaces. The kitchen and bathroom have been modernised to a high specification, complemented by generous open plan reception.

Located centrally, this flat is just under half a mile to Canonbury Overground station and also under half a mile to Essex Road.

### Features

- Two Double Bedrooms
- Private Entrance
- Maisonette
- Open Plan
- Leasehold
- Chain Free

# Rona Walk, London, N1



Total area (approx.) : 83 sq. m (893 sq. ft)  
Total balcony area (approx.) : 2.2 sq. m (24 sq. ft)  
Total patio area (approx.) : 2.1 sq. m (22 sq. ft)