



Albion Road, N16

£750,000

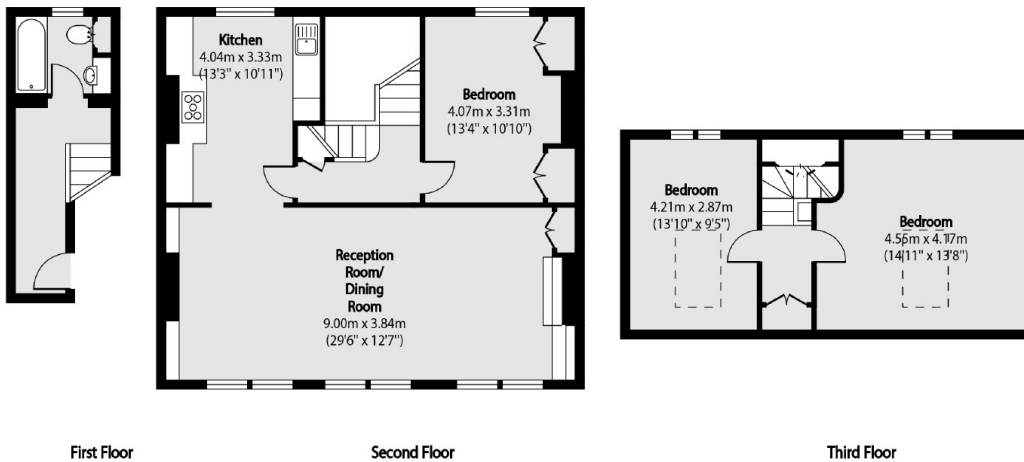
A spacious three double bedroom split level apartment arranged over the top two floors of this period conversion. With a large semi open plan kitchen this apartment is flooded with an abundance of East West natural light.

Just down the road from Newington Green and half a mile from Church street, this property has an abundance of Restaurants, shops and cafés close by. The nearest Station is Canonbury Overground just over half a mile walk and there are numerous bus routes to The City and the West End.

Features

- Circa 1300sqft
- Three Double Bedrooms
- Share of Freehold
- Period Conversion
- Semi Open Plan Living

Albion Road, London, N16



First Floor

Second Floor

Third Floor

Total area (approx): 118.93 sq m (1280 sq. ft)