

## Albion Road, N16

£700,000

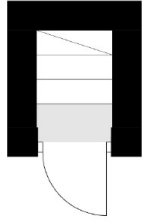
This attractive two bedroom home is set across the top two floors. Large sash windows allow for an abundance of natural light and open plan living creates a real feel of space. The bedrooms on the top floor have vaulted ceilings and skylights as well as built in storage in the main.

Just down the road from Newington Green and half a mile from Church street, this property has a plethora of Restaurants, shops and cafés close by. The nearest Station is Canonbury Overground just over half a mile walk and there are numerous bus routes to The City and the West End.

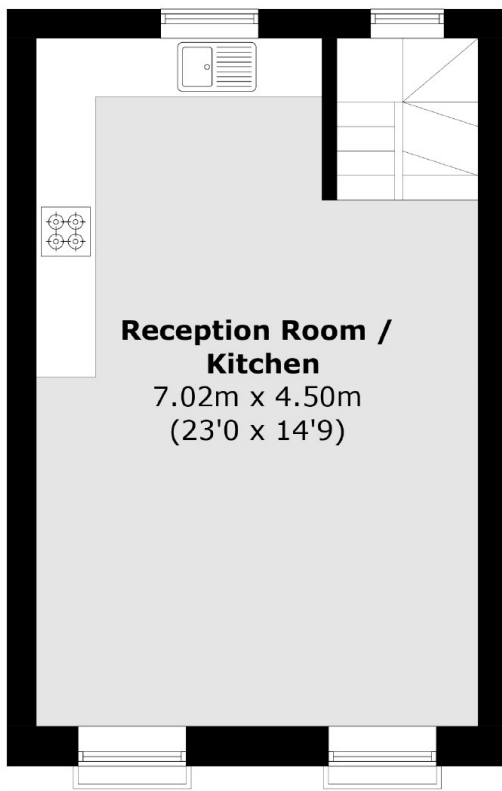
### Features

Two Bedrooms  
Top Floors  
Vaulted Ceilings  
Open Plan Living

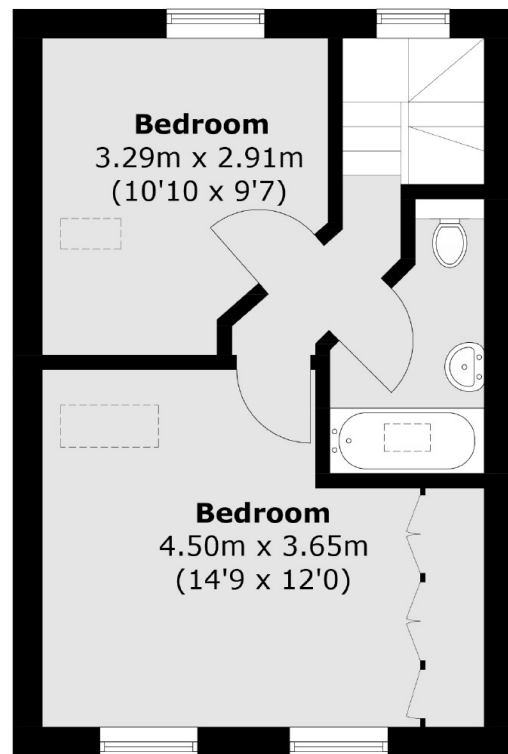
# Albion Road, London, N16



## Ground Floor



## First Floor



## Second Floor

Total area (approx.): 64.1 sq. m (689.9 sq. ft)