



Britannia Row, N1

£550,000

A top floor lateral apartment in Strang House. This property has three similar size double bedrooms making it ideal for sharers or investors. The building has lift access, well maintained communal space and it set just back from Essex Road.

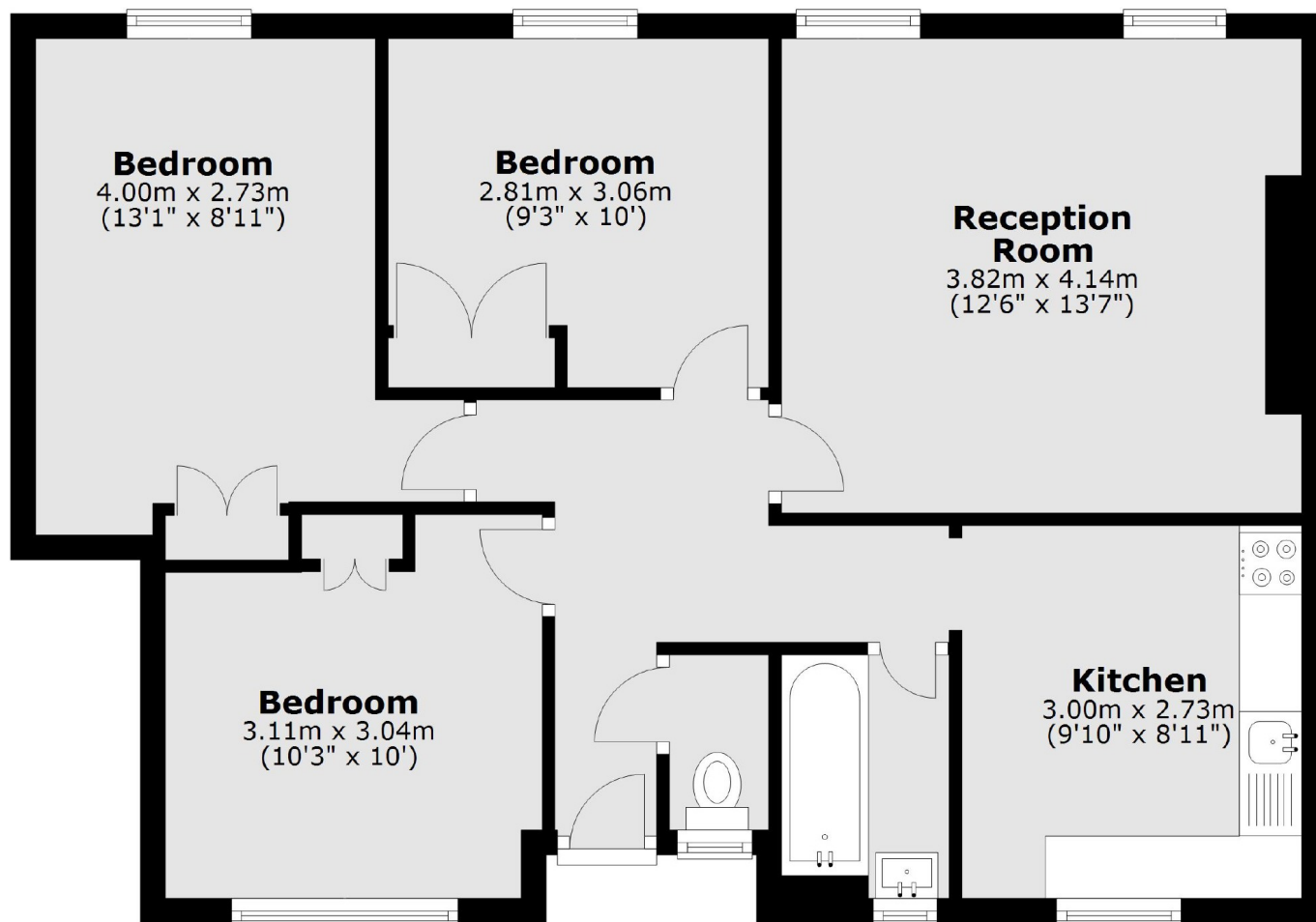
Highbury and Islington (Victoria Line and Overground) and Angel Underground (Northern Line) provide convenient access to both the City and the transport hub at Kings Cross / St Pancras International. There is a plethora of shops on famous Upper Street and Essex Road just at the top of Britannia Row.

Features

- Three Bedrooms
- Separate Kitchen
- Chain Free
- Modern Fittings
- Over 700sqft
- Top Floor
- Lift Access

**Britannia Row,
London, N1**

Fourth Floor



Total area: approx. 66.0 sq. metres (710.8 sq. feet)