



## Hardwick Street, EC1R

£599,000

A one bedroom apartment with a mezzanine level located off Amwell Street in The Remus Building. The apartment has an open plan kitchen and living area with wooden flooring throughout. The kitchen and bathroom are also recently renovated, in addition to recently installed energy efficient radiators. Residents have access to a communal landscaped garden.

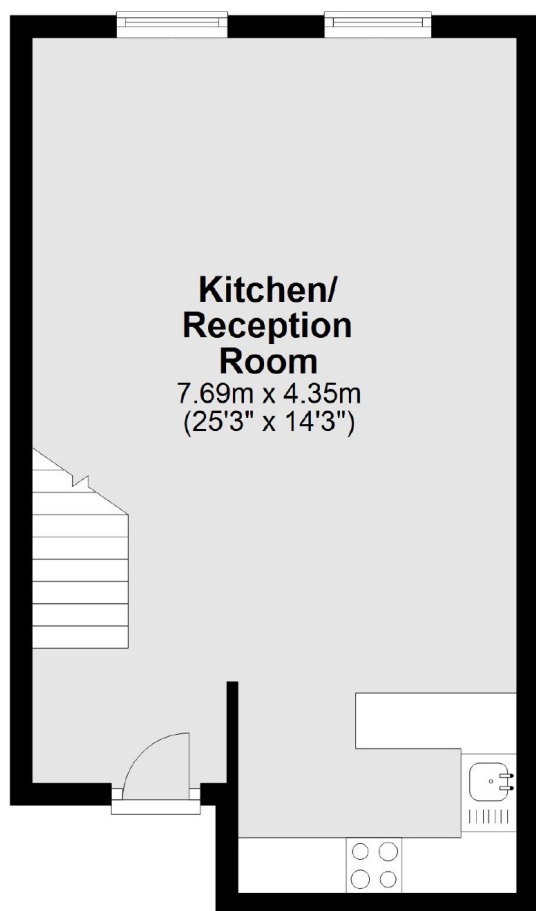
The Remus Building has an off site concierge and is located between Upper Street and Exmouth Market, which has numerous independent restaurants and coffee shops. The development is just under half a mile from Angel and over half a mile from Kings Cross Station. The property offers superb transport links to the City and the West End. Sadler's Wells Theatre is just over quarter of a mile from your door.

### Features

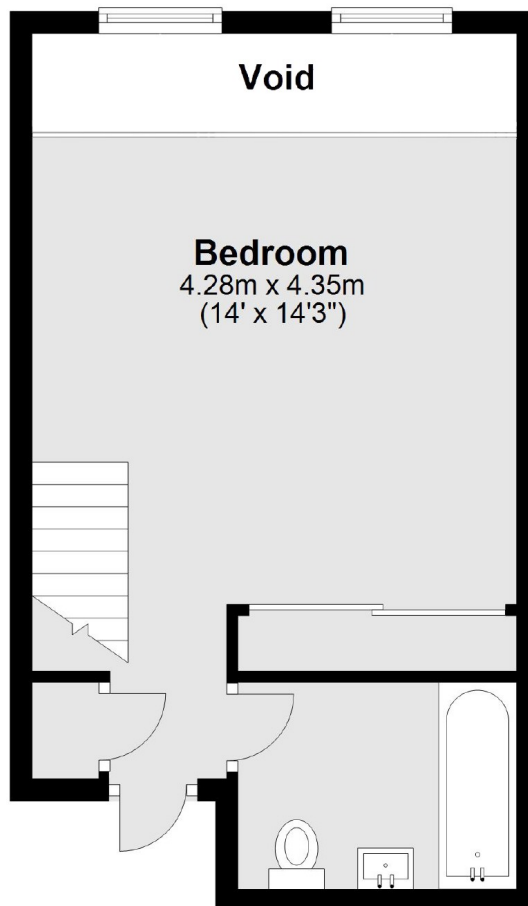
- One Bedroom
- Loft Style Flat
- Wooden Flooring
- Communal Gardens
- Warehouse Conversion
- Chain Free

# Hardwick Street, London, EC1R

## Ground Floor



## First Floor



Total area: approx. 59.2 sq. metres (636.9 sq. feet)