



Georges Road, N7

£2,700 Per week

A stylish two bedroom apartment in a Victorian School conversion. This contemporary conversion has impressively high ceilings with large windows and a mezzanine level master bedroom. The property has a modern finish throughout with wood flooring and integrated kitchen. The second bedroom is set up as a study at present making an ideal space to work from home.

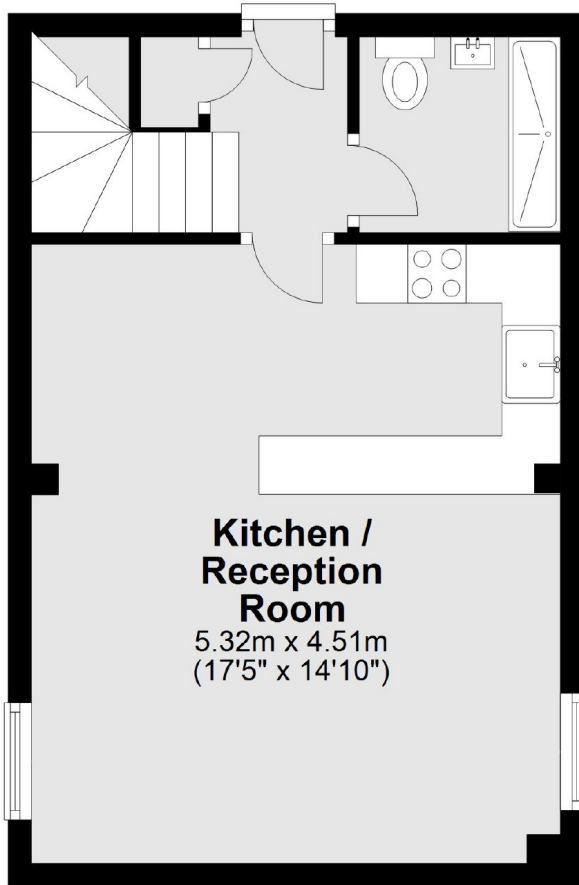
Georges Road is ideally located for ease of access to the City with direct links to Moorgate via Drayton Park station, the West End via Holloway Road and Caledonian Road Underground stations.

Features

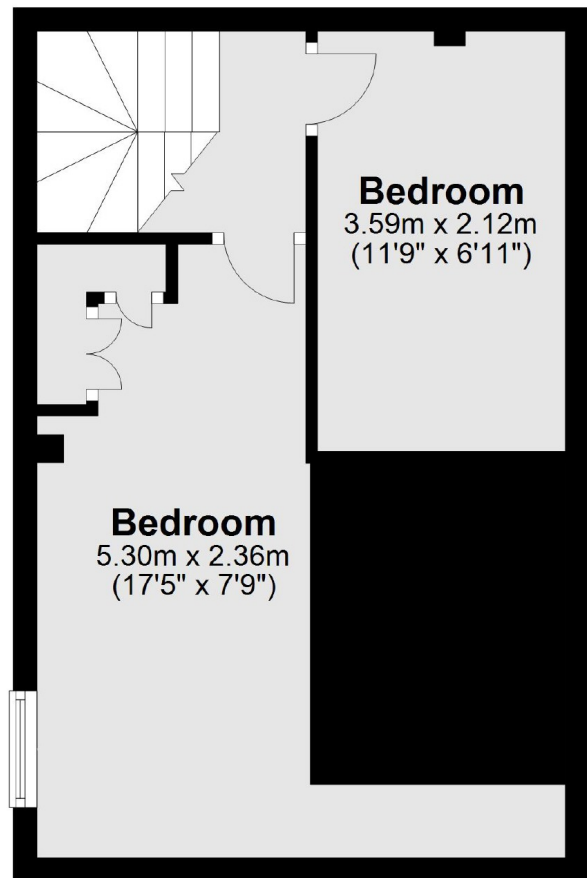
- Two Bedrooms
- School Conversion
- Open Plan Kitchen/Living Area
- Wooden Floors
- Double Height Ceiling
- Modern

Georges Road,
London, N7

Ground Floor



First Floor



Total area: approx. 63.7 sq. metres (685.8 sq. feet)