



Newington Green Road, N1 £500,000

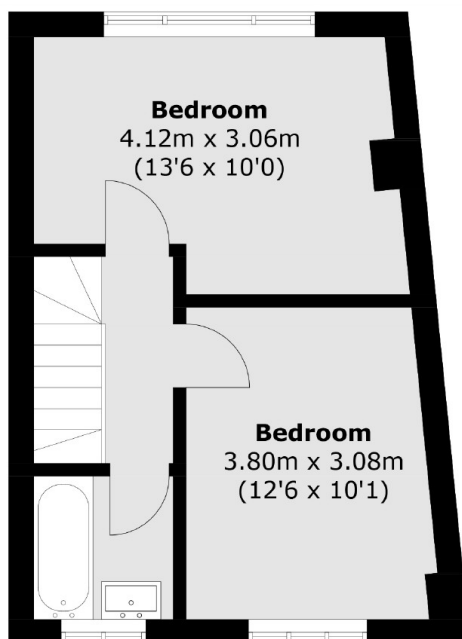
A well presented, two double bedroom maisonette within a purpose built block. This home comes complete with a separate kitchen and living space, with a private patio.

A third of a mile to Newington Green and New River Walk, with Canonbury overground station a similar distance. Highbury and Islington station (Victoria line and Overground) is three quarters of a mile away.

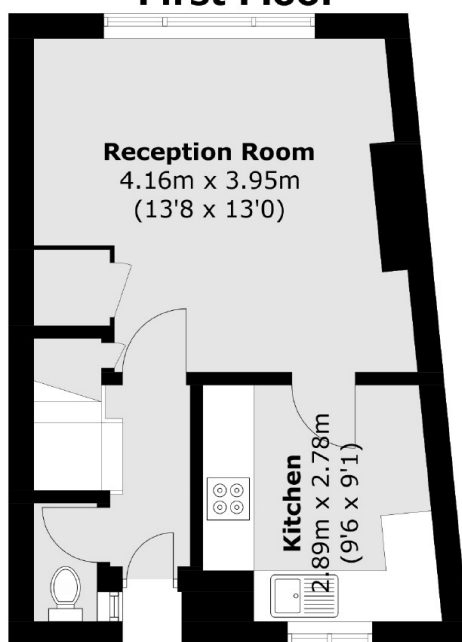
Features

- Two Double Bedrooms
- Private Patio
- Maisonette
- Private Entrance
- Ground Floor

Newington Green Road,
London, N1



First Floor



Ground Floor

Total area (approx.): 61.3 sq. m (659.8 sq. ft)