



Coleman Fields, N1

£646 Per week

A modern two double bedroom apartment set within this modern development with lift access and communal gardens. It has two bathrooms (one ensuite), a spacious living room with Juliette balcony and lots of built in storage space.

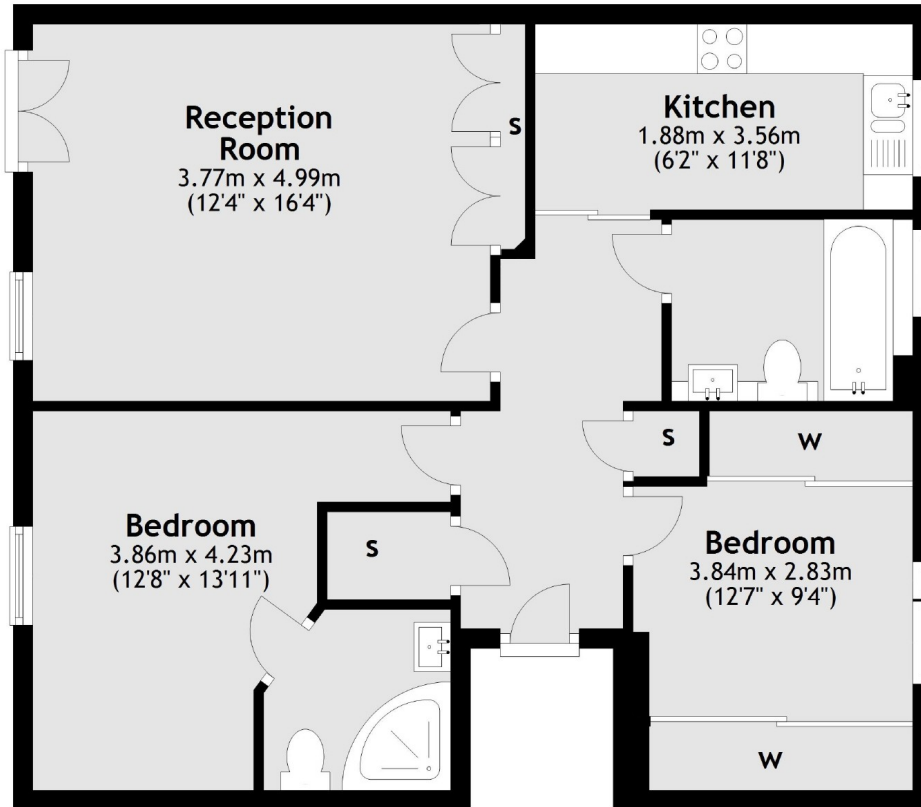
Island Apartments offers superb transport links at approximately three quarters of a mile between both Angel and Highbury & Islington stations. It provides excellent access to the shops, restaurants and bars of Upper Street.

Features

- Two Double Bedrooms
- Two Bathrooms
- Modern Development
- Communal Gardens
- Bike Storage
- Wooden Flooring

Coleman Fields, London, N1

Second Floor



Total area: approx. 66.1 sq. metres (711.7 sq. feet)