



Northchurch Road, N1

£2,100 Per week

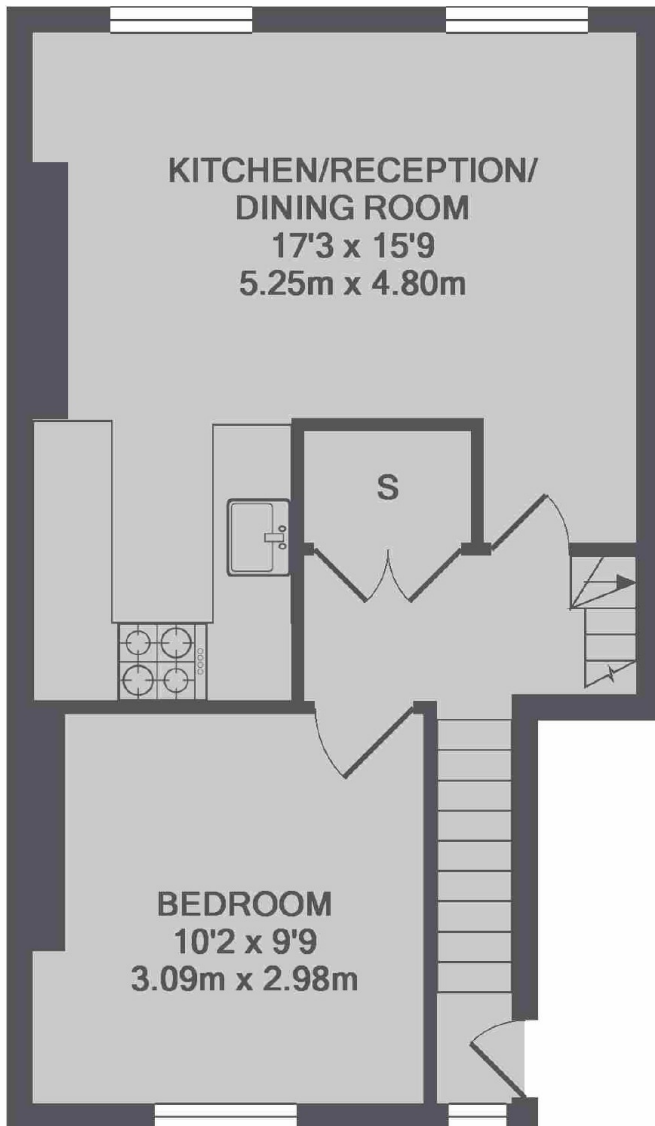
A modern one bedroom flat on the second floor of a period building close to Essex Road. With a double bedroom, bright open plan living room with modern kitchen this is the perfect flat for a single tenant or couples.

Close to Essex Road station and within easy reach of both Angel and Highbury & Islington tube stations. There are lots of shops, bars, restaurants and other amenities on nearby Upper Street.

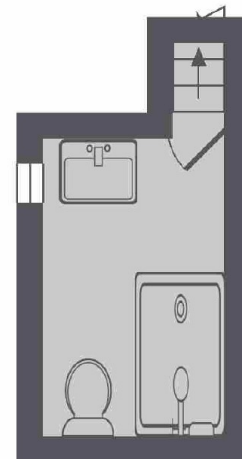
Features

- One Double Bedroom
- Second Floor
- Period Building
- Wood Floors
- Fitted Storage
- Open Plan Kitchen

Northchurch Road, London, N1



2ND FLOOR



3RD FLOOR

TOTAL APPROX. FLOOR AREA 447 SQ.FT. (41.5 SQ.M.)