



Hertford Road, N1

£360,000

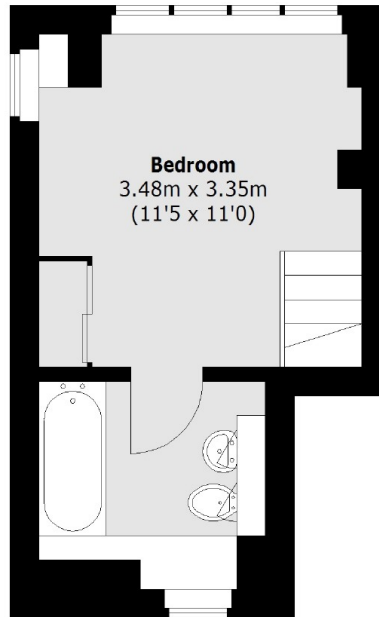
Located in the lively Haggerston area is a delightful split level apartment on the second and third floor of a small private block. This flat is being offered in turn key condition and chain free.

Situation next to Kingsland Basin, Haggerston Station is moments away, whilst the several bus routes down Kingsland Road take you directly into the City of London. Additionally, the pathways and eateries of Regent's Canal are on your doorstep.

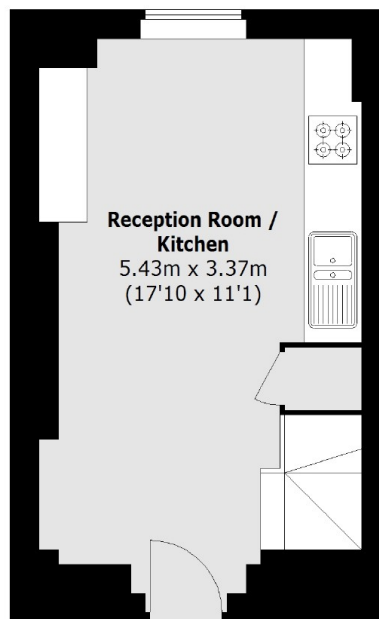
Features

- Open Plan
- Second Floor
- Split Level
- Chain Free
- Fitted Storage

Hertford Road,
London, N1



Third Floor



Second Floor

Total area (approx.): 36.3 sq. m (390.7 Sq. ft)