



Manor Road, N16

£575,000

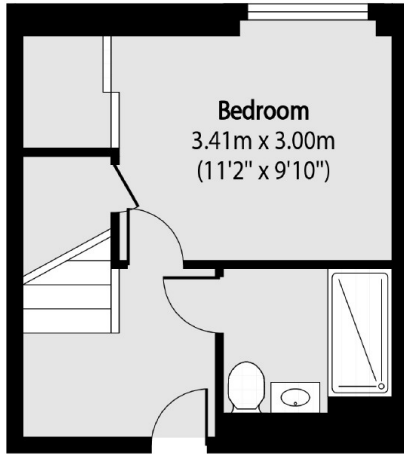
This generous apartment is set within a private, gated development in Stoke Newington. Split over two levels, this two bedroom home features open plan kitchen and living which leads directly out to a large South Facing balcony.

Situated on the corner of Abney Park, this property is ideally located for large green spaces with Clissold park which is less than a mile away. This home is also in the perfect position for the restaurants, cafés and bar of Stoke Newing with the station and high street under 1/2 a mile distance.

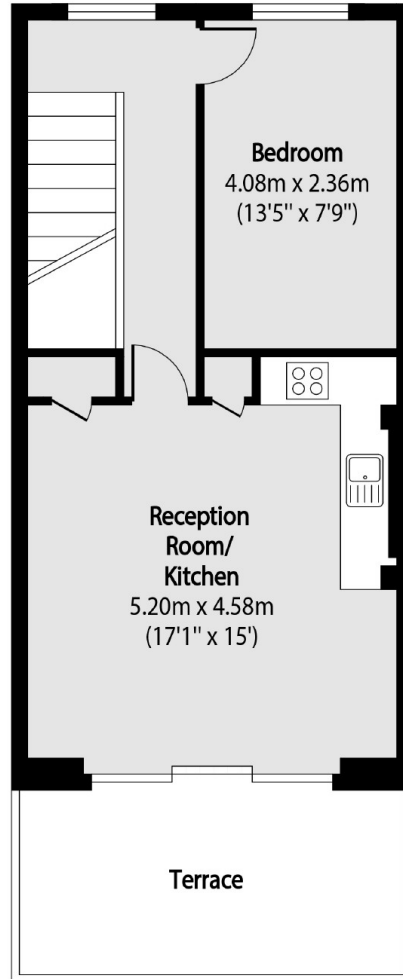
Features

- Split Level
- Circa 700sqft
- Two Double Bedrooms
- South Facing Private Balcony
- Open Plan Kitchen and Living

Manor Road, London, N16



Third Floor



Fourth Floor

Total area (approx): 65.48 sq m (705 sq. ft)

Terrace total area (approx): 10.96 sq m (118 sq. ft)