



Baring Street, N1

£1,250,000

A beautiful terraced house on Baring Street, Islington. The period features in this two bedroom home have been carefully looked after by the current owner, seamlessly combining contemporary finishes with Victorian charm.

Baring Street is situated within easy reach of the superb amenities of both Islington and Shoreditch. Shoreditch Park and Regents Canal are just on the door step for the perfect picnic or Sunday stroll.

Features

- Two Double Bedrooms
- Open Plan Living Space
- Separate Kitchen
- Freehold
- Original Wooden Floors
- Original Marble Fireplace
- South East Facing Garden



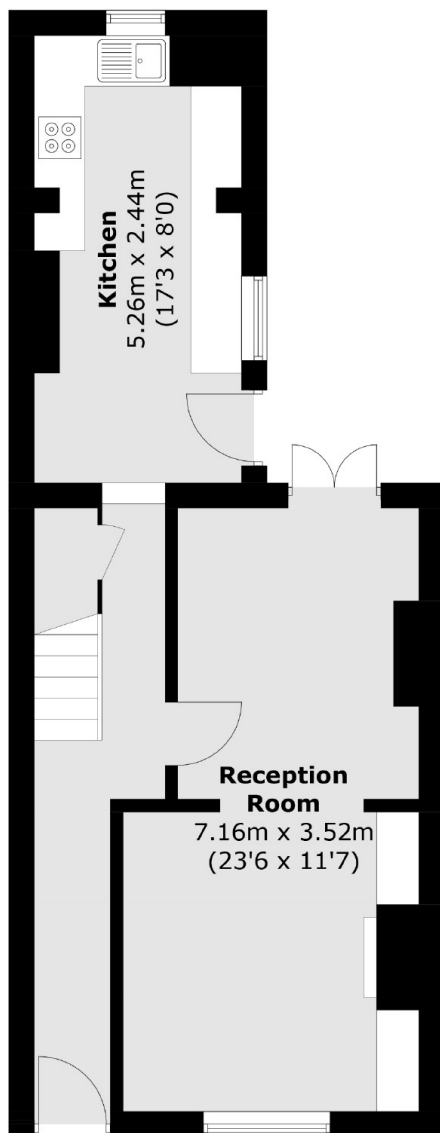
Baring Street, N1

The ground floor has an open plan living/dining with a large separate kitchen. The cosy dining and reception rooms have original floor boards which also feature throughout the property. Accessed through either the kitchen or reception room is a charming South East facing patio garden.

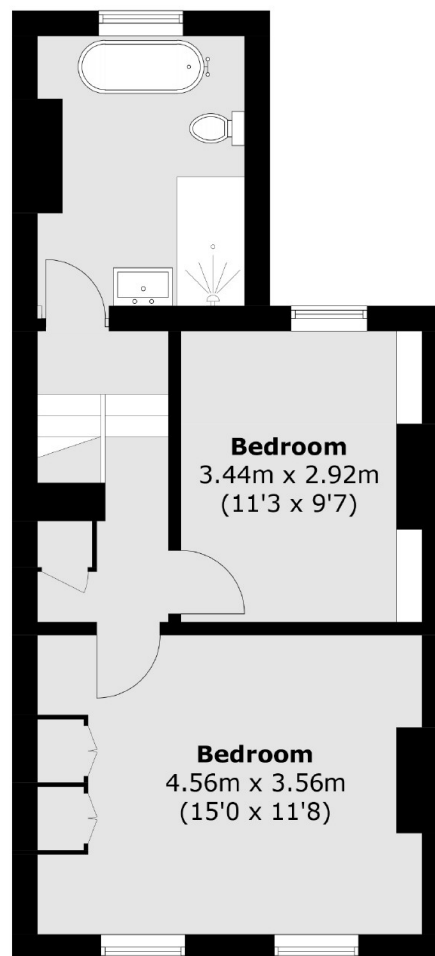
Upstairs you will find a large family bathroom with a separate shower and bath and two large double bedrooms. The principle bedroom is at the front of the house with two wooden sash windows and an abundance of fitted storage.



Baring Street, London, N1



Ground Floor



First Floor

Total area (approx.): 87.4 sq. m (940.8 sq. ft)