



Rosebery Avenue, EC1R

£1,350,000

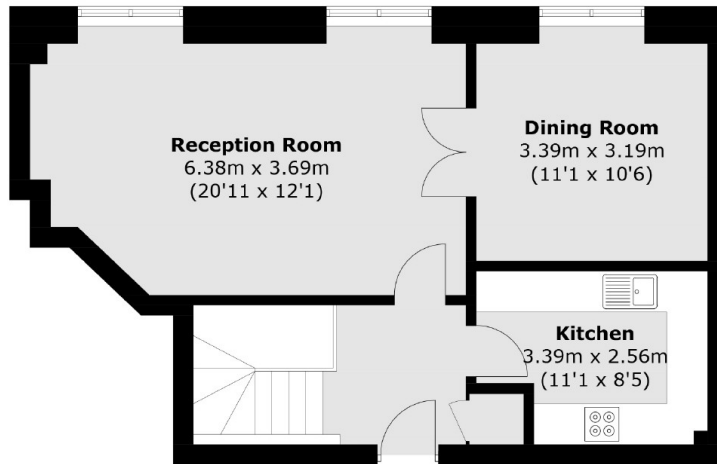
A large split level three bedroom, two bathroom apartment in the historic former headquarters of Thames Water. This iconic, Grade II listed building lies upon an acre of immaculately maintained communal gardens and benefits from a Share of Freehold, on site gym, concierge, board room and a secure gated parking space.

Located in the heart of London's Clerkenwell neighbourhood, with Angel Station on the Northern Line just 0.3 miles away and the vibrant Exmouth Market with its bars and restaurants even closer. Additionally, both the City and West End are within easy reach.

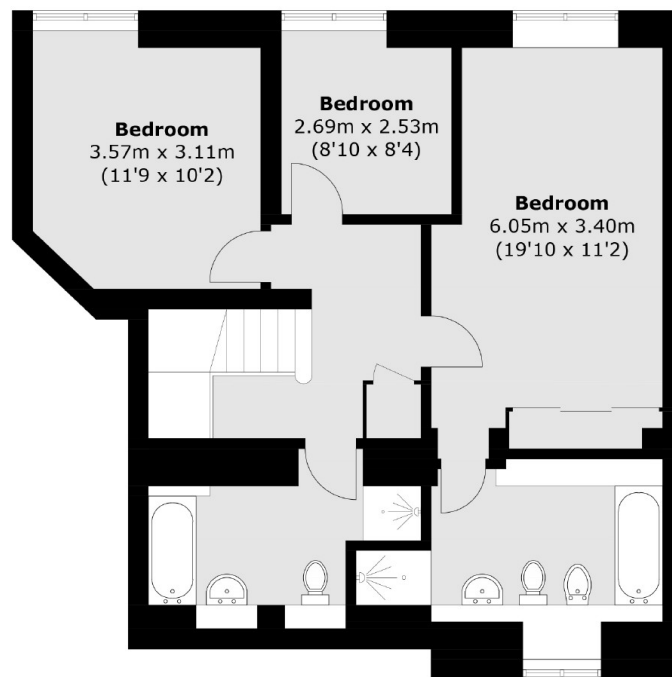
Features

- Three Bedrooms
- Split Level
- Chain Free
- Share of Freehold
- Two Bathrooms
- Gated Parking
- On-Site Concierge

Rosebery Avenue, London, EC1R



Raised Ground Floor



Lower Ground Floor

Total area (approx.): 123.6 sq. m (1,330.3 sq. ft)