



Drummond Way, N1

£850,000

A two bedroom apartment in a converted school in Barnsbury. This modern second and third floor flat is set in a gated development with on site concierge.

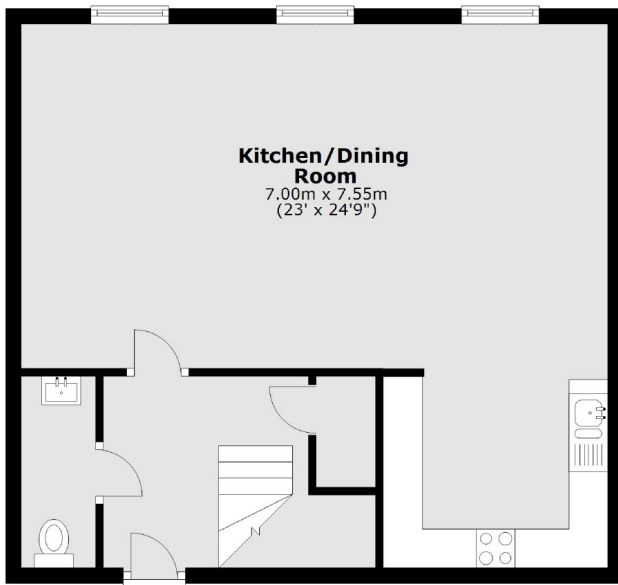
Both Highbury & Islington and Caledonian Road & Barnsbury Stations are less than half a mile away, providing access to the Victoria, Overground and National Rail Lines. The shops, bars and restaurants of Islington's Upper Street are also within easy reach.

Features

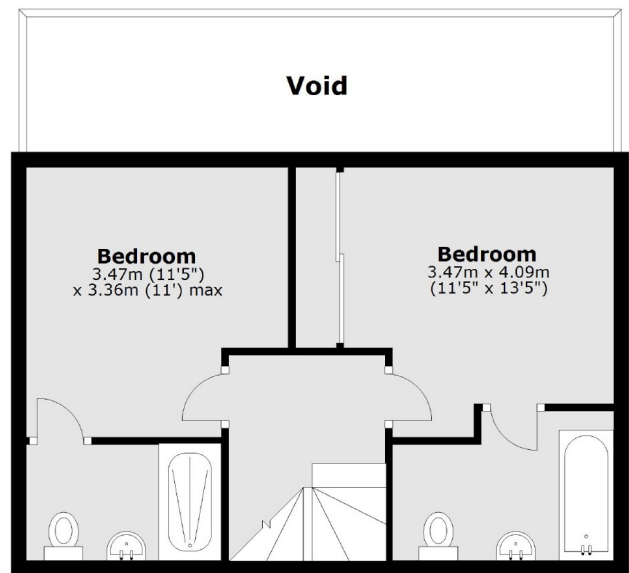
- OIEO £850,000
- Two Bedrooms
- School Conversion
- Concierge
- Gated Development
- Split Level
- Two Bathrooms

Drummond Way, London, N1

Second Floor



Third Floor



Total area: approx. 91.1 sq. metres (980.3 sq. feet)