



## Hardwick Street, EC1R

### £1,000,000

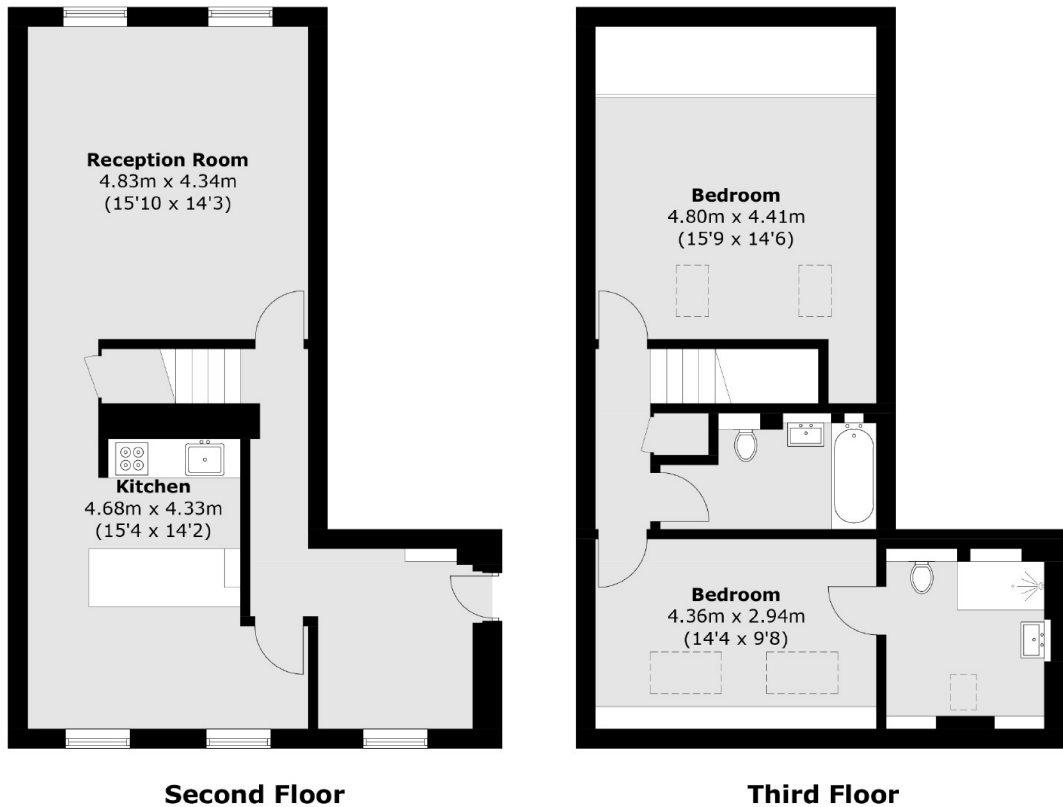
The Remus building sits in the heart of the old Thames Valley estate just off the much desired Rosebery Avenue. Finished to a high standard this home is set over two floors featuring two double bedrooms, two baths, a separate office space, semi open plan kitchen and living with hard wood floors throughout.

The Remus Building is located between Upper Street and Exmouth Market, which has numerous independent restaurants and coffee shops. The development is just under half a mile from Angel and over half a mile from Kings Cross Station. The property offers superb transport links to the City and the West End. Sadler's Wells Theatre is just over quarter of a mile from your door.

### Features

- Two Bedroom
- Off Street Parking
- Two Bath
- Wooden Flooring
- Communal Gardens
- Warehouse Conversion

# Hardwick Street, London, EC1R



Total area (approx.): 105.3 sq. m (1,133.4 sq. ft)