



Kingsland Road, E8

£800,000

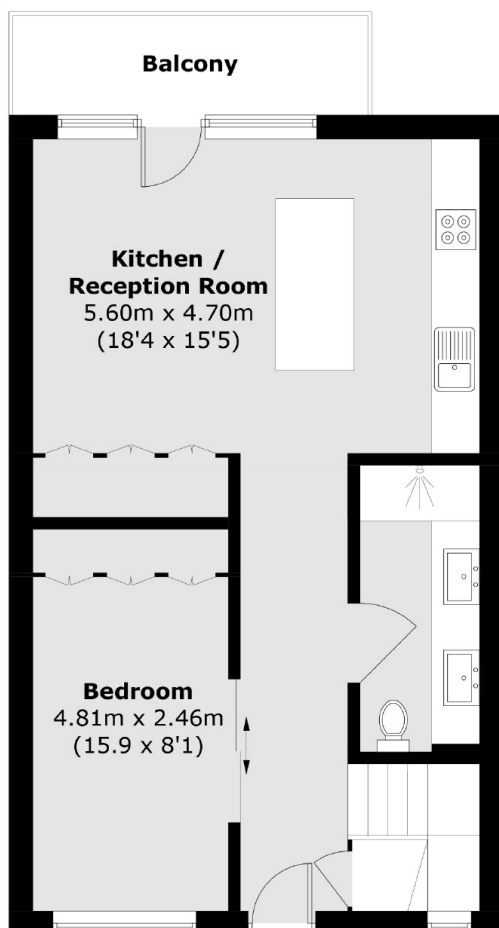
A spacious and contemporary split-level two bed apartment situated in one of East London's most thriving areas. This immaculately presented property offers a south facing private balcony, private off-street parking and double height ceiling space in the kitchen/ dining area.

Kings wharf is a quiet and peaceful gated residence set well back from Kingsland Road and is conveniently located for Haggerston Overground (0.1 miles) and the many bus routes serving Liverpool Street and the City found on Kingsland Road. The extensive selection of shops, bars & restaurants found in Shoreditch (1.1 miles), Dalston (0.5 miles) and Haggerston are also within easy reach.

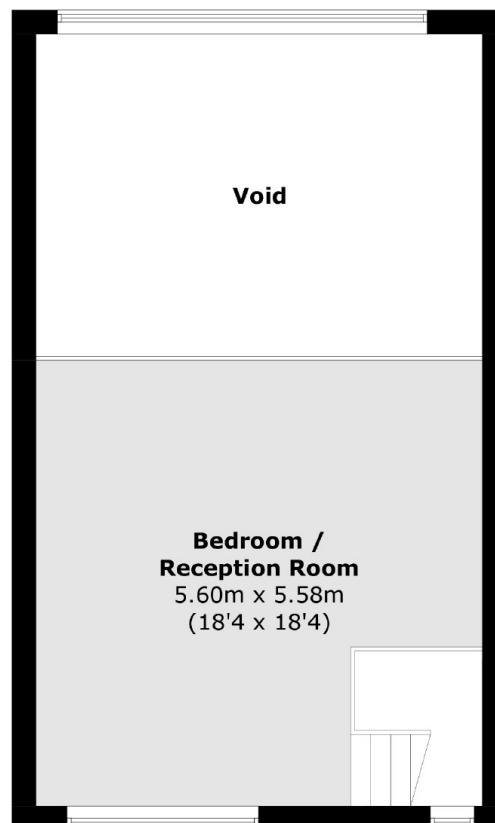
Features

- Fully Refurbished
- Double height ceiling
- Chain free
- Off-street parking
- Gated Development
- Lift Access

Kingsland Road, London, E8



Ground Floor



First Floor

Total area (approx.): 86.0 sq. m (925.7 sq. ft)
(Excluding Void)
Balcony : 5.6 sq. m (60.3 sq. ft)