

## The Haydon, EC3N

£1,150,000

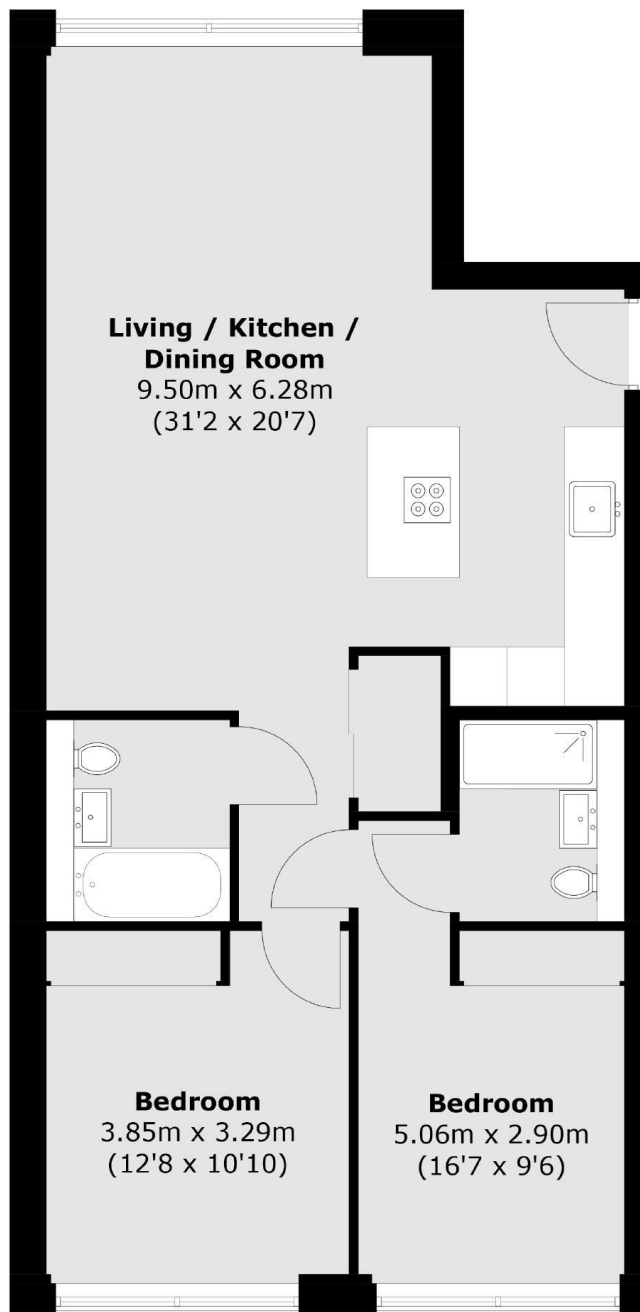
Designed to the highest specifications, The Haydon comprises a collection of unique apartments situated in the heart of the city. This three-bedroom penthouse is one-of-a-kind, boasting an extensive specification and a private roof terrace offering iconic views of the city, Tower Bridge, and Canary Wharf. The kitchen dining area is complete with composite stone worktops, multi-function Miele appliances, and a wine cooler. Engineered Oak herringbone extends through the living area, while the bedrooms enjoy comfort with plush luxury carpets. Bedrooms are equipped with bespoke built-in wardrobes. The bathrooms showcase refined finishes, featuring white marble tiling and an integrated TV screen. Sonos ceiling speakers are seamlessly integrated throughout all rooms.

The Haydon is situated in the central area of The City, only a short 2-minute walk from Aldgate Underground Station and 5 minutes from Fenchurch Street Station offering great connection to Canary Wharf, Bond Street and Green Park. Heathrow airport is easily accessible via the Elizabeth Line. The Haydon is conveniently located just a short walk to shopping, eateries and vibrant Spitalfields Market.

### Features

- Two Double Bedrooms
- City Views
- Private Balcony
- Concierge
- Gym & Spa Facilities

The Haydon,  
London, EC3N



Total area (approx.): 78.69 sq. m (847.0 sq. ft)

**Dexters**

Islington  
76 Upper Street  
London  
N1 0NU  
Sales  
020 7483 6373

Energy Rating: . We aim to make our particulars both accurate and reliable. However they are not guaranteed; nor do they form part of an offer or contract. If you require clarification on any points then please contact us, especially if you're traveling some distance to view. Please note that appliances and heating systems have not been tested and therefore no warranties can be given as to their good working order.

 **RICS** | Regulated  
Estate Agent  
and Letting Agent

dexters.co.uk