



Mackenzie Road, N7

£325,000

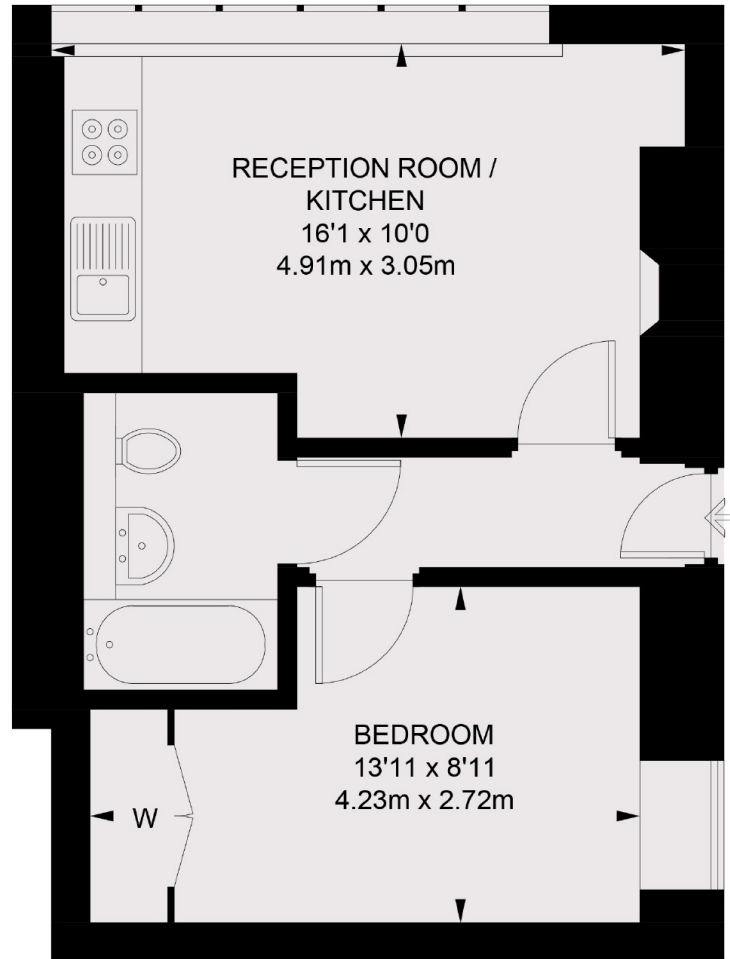
This one double bedroom flat sits on the ground floor of an old shop conversion. Immaculately presented, this home benefits from high ceilings, open plan kitchen and living space and a private entrance.

With Paradise Park directly opposite this flat is ideally located for green space and transport links alike. Caledonian Road station (Piccadilly) is around a quarter of a mile walk away and Highbury and Islington (Victoria and Overground) is around half a mile away.

Features

- One Bedroom
- Private Entrance
- Chain Free
- Modern Finish
- High Ceilings

Mackenzie Road, London, N7



GROUND FLOOR

TOTAL APPROX. FLOOR AREA 343 SQ. FT. (31.9 SQ. M.)