

Highbury Stadium Square, N5

£699,999

A large, lateral two bedroom apartment situated in the Southstand of Highbury Stadium Square. Coming through a private entrance, this property has an open plan kitchen and living space, a balcony, two bathrooms and a private courtyard.

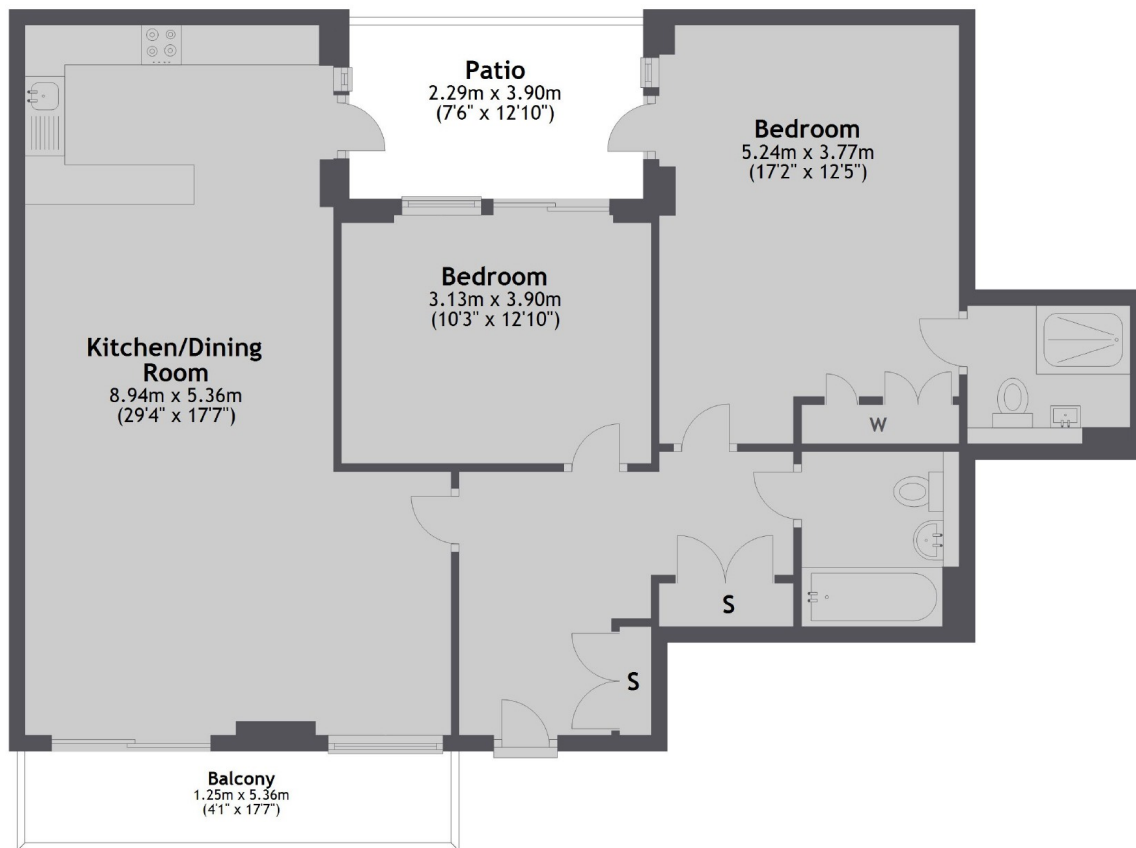
Conveniently situated from Arsenal tube station on the Piccadilly line and Drayton Park Station connecting to The City. This apartment is close to the restaurants and independent cafes and shops of Highbury Barn and Highbury Park.

Features

- Two Large bedrooms
- Two bathrooms
- Patio and Balcony
- 24 hour Concierge
- On-Site Gym
- Underground Parking to Rent

Highbury Stadium Square, London, N5

Ground Floor



Main area: Approx. 93.5 sq. metres (1006.7 sq. feet)
Plus balconies, approx. 7.0 sq. metres (75.7 sq. feet)