



Amwell Street, EC1R

£1,500,000

Situated within the New River Head Conservation Area lies this beautifully renovated Grade II listed four bedroom Georgian house. The freehold family home has been lovingly renovated while retaining a lot of its period charm. The property was designed by architect Sarah Earney and retains its original floor boards and lime plaster.

Amwell Street is around half a mile from Angel Station, Upper Street and Kings Cross St Pancras stations. Exmouth Market and Sadler's Wells Theatre are around a quarter of a mile away, whilst Farringdon station is within walking distance making Heathrow, Gatwick and Luton airports within easy reach.

Features

- Freehold House
- Four Bedrooms
- Grade II Listed
- Chain Free
- Original Floor Boards
- Lime Plaster



Amwell Street, EC1R

On the ground floor you will enter into the hallway which leads onto a double reception with double height ceilings and sash windows. A family bathroom can also be found past the access to a private courtyard.

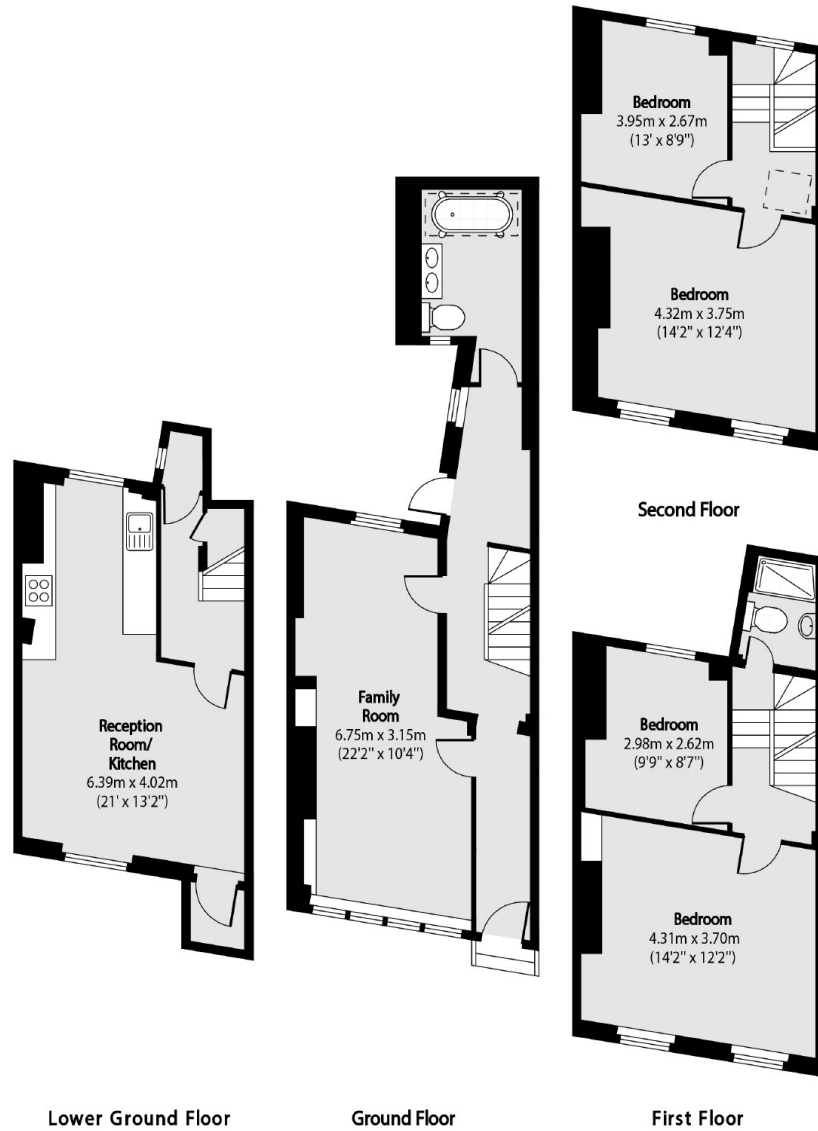
Downstairs you have a modern dining space with a fully equipped deVOL Kitchen with under floor heating and separate utility and pantry.

As you make your way to the upper floors there is a generous double principal bedroom with floor to ceiling windows and original re-purposed gas lamps. A second bedroom and additional bathroom can also be found on this level.

The second floor is then home to an additional two bedrooms and a small landing that lends itself to an efficient office space complete with sky light.



Amwell Street, London, EC1R



Total area (approx): 126.53 sq m (1362 sq. ft)