



## Riversdale Road, N5

£625,000

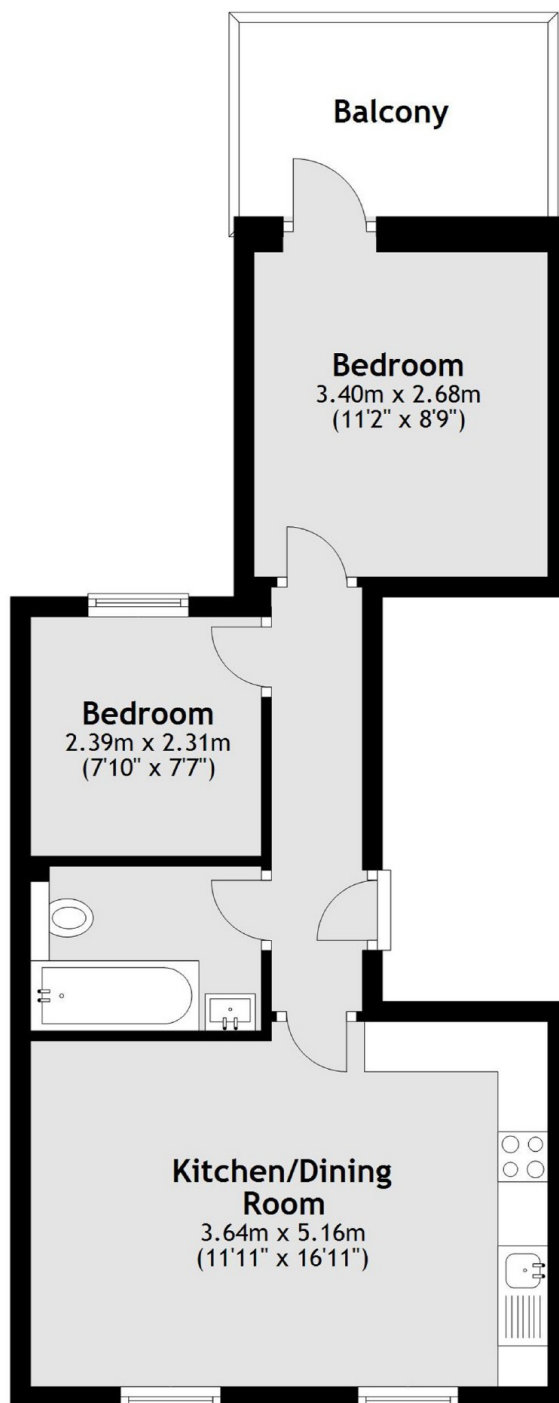
Set on the first floor of a Victorian conversion, this lovely home has been renovated inside and out whilst maintaining its period charm. With two bedrooms this lateral first floor flat has open plan kitchen and living with access a private, South facing terrace.

Riversdale Road is ideally located for transport links and green space. Arsenal (Piccadilly Line) and Finsbury Park (Picadilly, Great Northern and Thameslink line) are around half a mile away and Clissold Park is less than a quarter mile away.

### Features

- Two Bedrooms
- Completely Renovated
- Sash Windows
- South Facing Terrace
- High Ceilings
- First Floor

# Riversdale Road, London, N5



Main area: Approx. 42.6 sq. metres (458.2 sq. feet)  
Plus balconies, approx. 6.3 sq. metres (67.7 sq. feet)