



De Beauvoir Crescent, N1 £415,000

A one bedroom property on the first floor of this canal side development. This apartment has lift access, an open plan kitchen/ reception and modern fittings throughout.

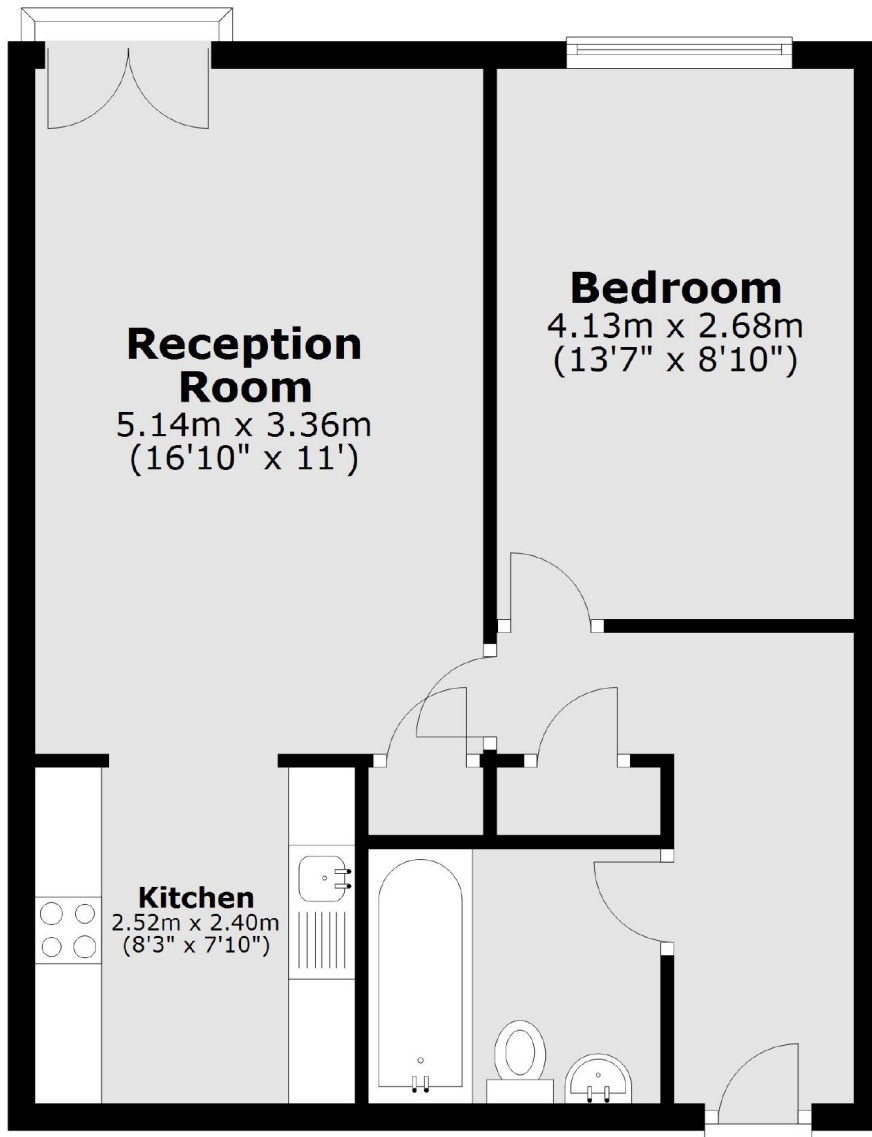
The nearest railway station is Haggerston over ground which is just a few stops to Highbury and Islington. There is easy access to Shoreditch and the City via Bus Routes along Kingsland Road. It's also perfectly positioned for Canal walks or runs.

Features

- First Floor
- One Bedroom
- Juliette Balcony
- Open Plan Kitchen
- Canal Side Development
- Modern Interiors

De Beauvoir Crescent,
London, N1

First Floor



Total area: approx. 47.7 sq. metres (513.1 sq. feet)