



Highbury Stadium Square, N5

£425,000

A one bedroom flat on the second floor of the highly sought after Highbury Stadium Square development. Immaculately presented, this home benefits from underfloor heating, open plan living room with a private West facing balcony overlooking the central courtyard.

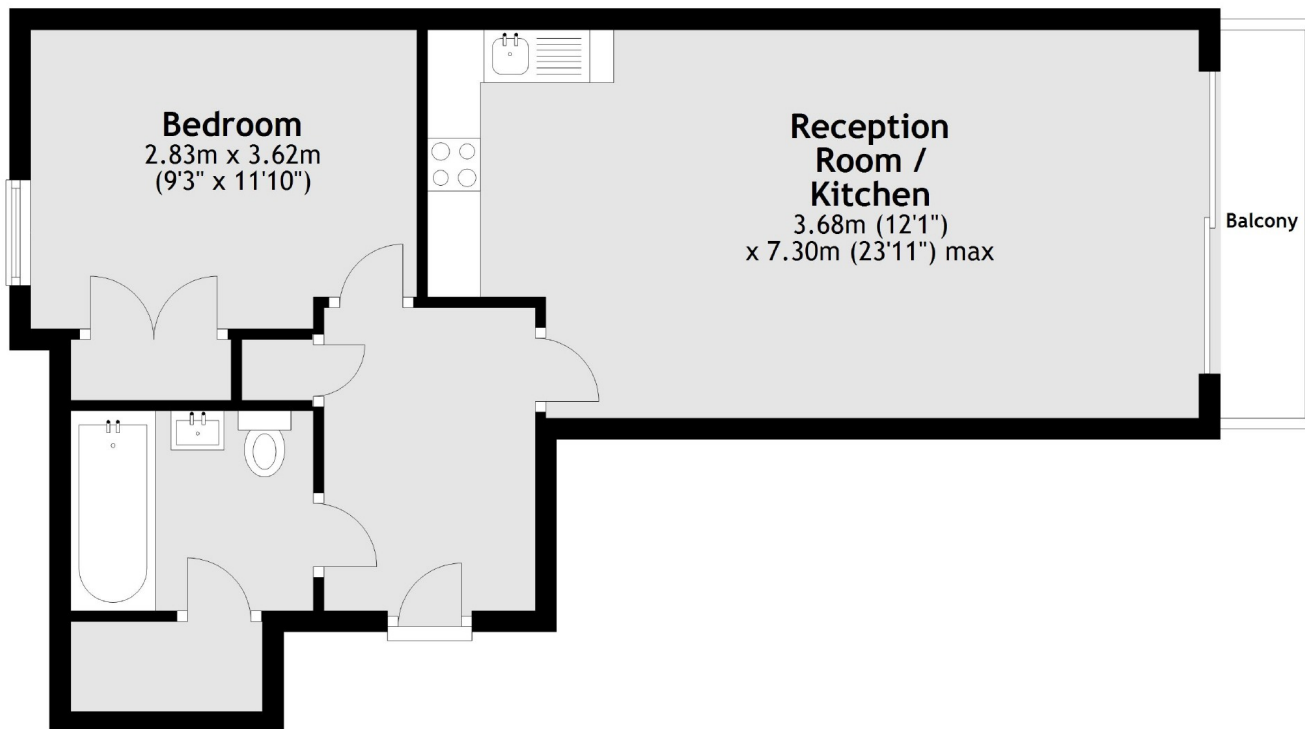
At under half a mile from Arsenal tube station (Piccadilly Line) and Drayton Park station (Great Northern Line) there are numerous connections to The City. The restaurants, shops and independent cafés of Highbury Barn and Highbury Park are also within easy reach.

Features

- Chain Free
- Open Plan
- 24hr Concierge
- Under Floor Heating
- West Facing Balcony

Highbury Stadium Square, London, N5

Second Floor



Main area: Approx. 50.0 sq. metres (538.7 sq. feet)
Plus balconies, approx. 3.0 sq. metres (31.9 sq. feet)