



Westbourne Road, N7

£1,075,000

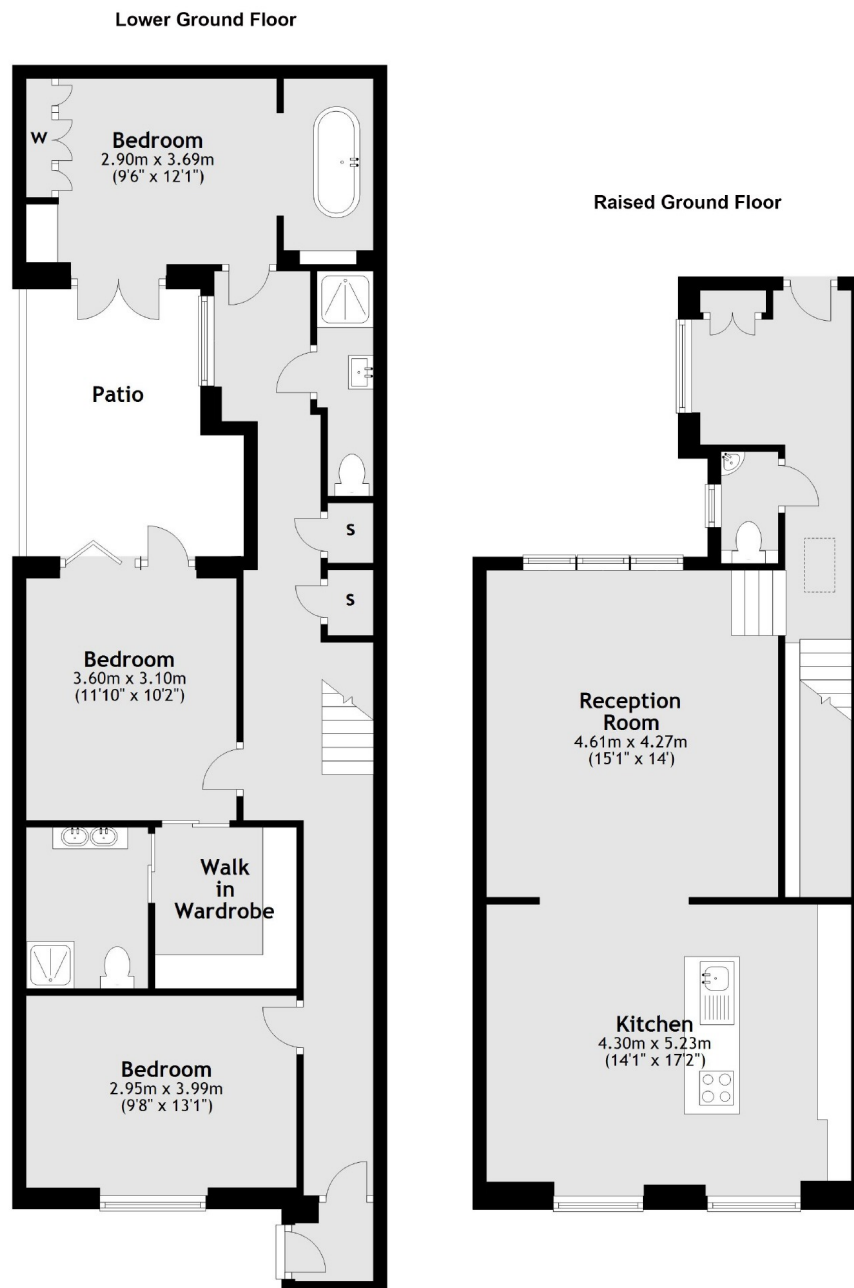
A unique three double bedroom maisonette in excess of 1400 sqft. This Victorian conversion, has two outdoor spaces and an open plan kitchen/living room with modern floor to ceiling windows but also maintains some period features.

The well presented apartment is located just off the picturesque Arundel square and is half a mile from Highbury and Islington Underground Station. The many shops, amenities and eateries of Upper Street are also half a mile walk.

Features

Period Conversion
Three Bedrooms
Two Bathrooms
Master Suite
Walk-in Wardrobe
Split Level
Two Terraces

Westbourne Road, London, N7



Total area: approx. 130.8 sq. metres (1408.4 sq. feet)

Contact

To arrange a viewing call our office on the number below or visit our website.



Energy Rating: D. We aim to make our particulars both accurate and reliable. However they are not guaranteed; nor do they form part of an offer or contract. If you require clarification on any points then please contact us, especially if you're traveling some distance to view. Please note that appliances and heating systems have not been tested and therefore no warranties can be given as to their good working order.