

# Colin Dean Residential

in partnership with Dexters



## Connaught Road, HA3

£5,500 pcm

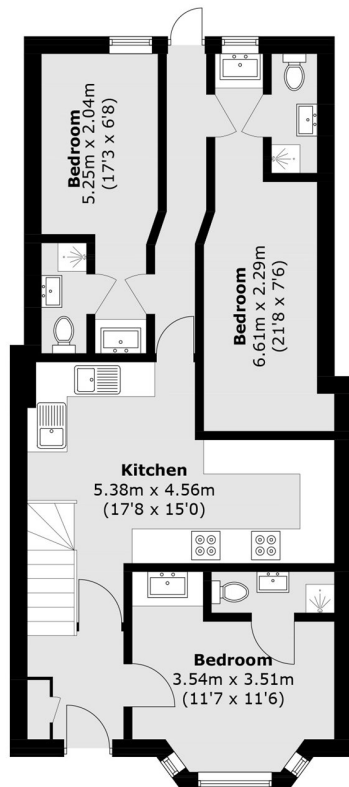
This beautifully renovated six bedroom, six bathroom HMO property, offers modern accommodation ideally suited to professional sharers. Each bedroom benefits from its own private en-suite and individual fridge, ensuring comfort, convenience and privacy for all residents. At the heart of the home is a large, contemporary communal kitchen with modern integrated appliances and ample space for dining and socialising, making it ideal for shared living. Energy Rating: E.

Conveniently located close to local amenities, excellent transport links and key employment hubs, the property provides easy access for commuting professionals. Harrow & Wealdstone Station Overground Line and Bakerloo) is approximately 1.0 Miles away.

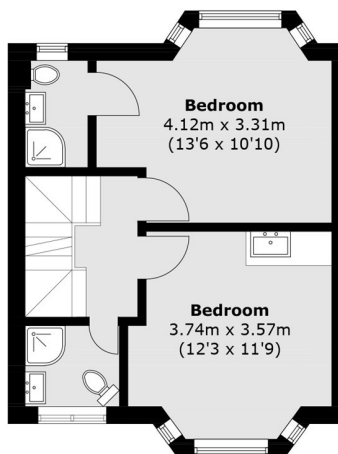
- Newly Refurbished • Six Double Bedrooms • Six Bathrooms •
- Modern Kitchen • Off Street Parking • Private Garden •

# Colin Dean Residential

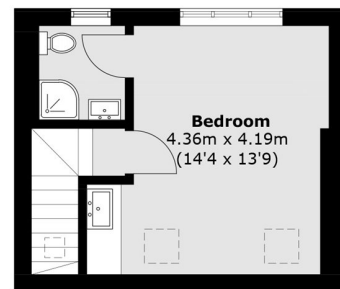
in partnership with Dexters



**Ground Floor**



**First Floor**



**Second Floor**

Total area (approx.): 120.3 sq. m (1,294.9 sq. ft)

Colin Dean Residential  
350 Pinner Road,  
Harrow, HA1 4LB  
020 8515 7929  
[daniel.murray@colindean.com](mailto:daniel.murray@colindean.com)

Energy Rating: E We aim to make our particulars both accurate and reliable. However they are not guaranteed; nor do they form part of an offer or contract. If you require clarification on any points then please contact us, especially if you're travelling some distance to view. Please note that appliances and heating systems have not been tested and therefore no warranties can be given as to their good working order.