

Colin Dean Residential

in partnership with Dexters



Gayton Road, HA1

£1,600 pcm

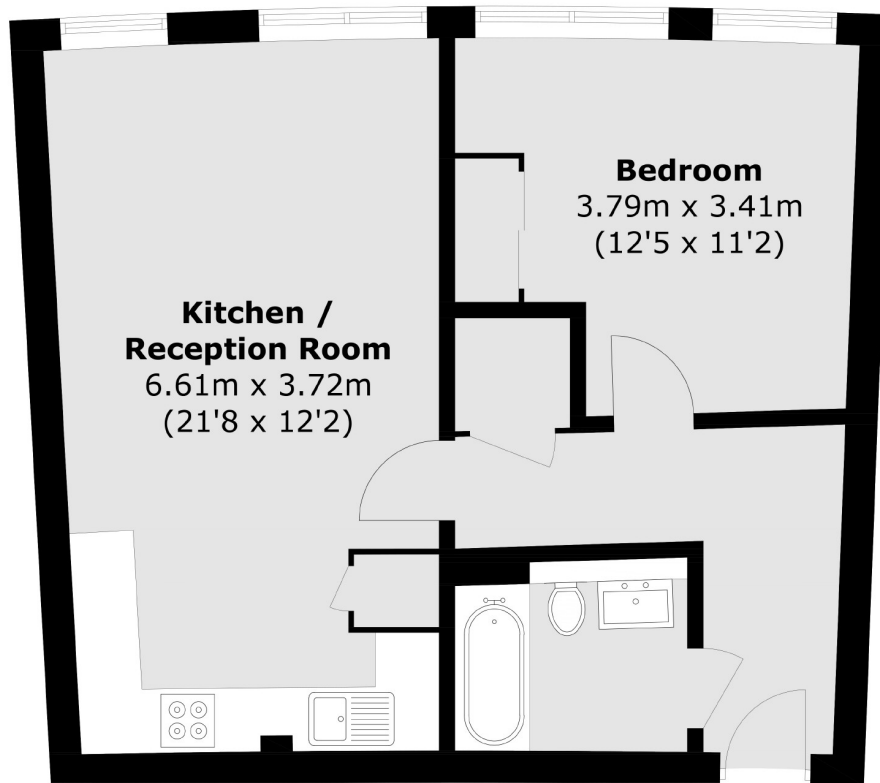
Located on the ground floor of this popular development is a spacious one double bedroom flat which offers an open plan kitchen/reception room with modern integrated appliances. This apartment is well suited for a single professional and couples. Energy Rating: .

The property is situated within close proximity to local shops, bus stops and popular schools nearby. Harrow on the Hill station (Metropolitan line) is conveniently located 0.2 miles away.

- Large One Double Bedroom • New Build Development • Wooden Flooring •
- Open Plan Kitchen/Reception • Modern Interior • Central Location •

Colin Dean Residential

in partnership with Dexters



Total area (approx.): 49.2 sq. m (529.6 sq. ft)

Colin Dean Residential
350 Pinner Road,
Harrow, HA1 4LB
020 8515 7929
enquiries@colindean.com

Energy Rating: We aim to make our particulars both accurate and reliable. However they are not guaranteed; nor do they form part of an offer or contract. If you require clarification on any points then please contact us, especially if you're travelling some distance to view. Please note that appliances and heating systems have not been tested and therefore no warranties can be given as to their good working order.