

Colin Dean Residential

in partnership with Dexters



Roxeth Hill, HA2

£1,650 pcm

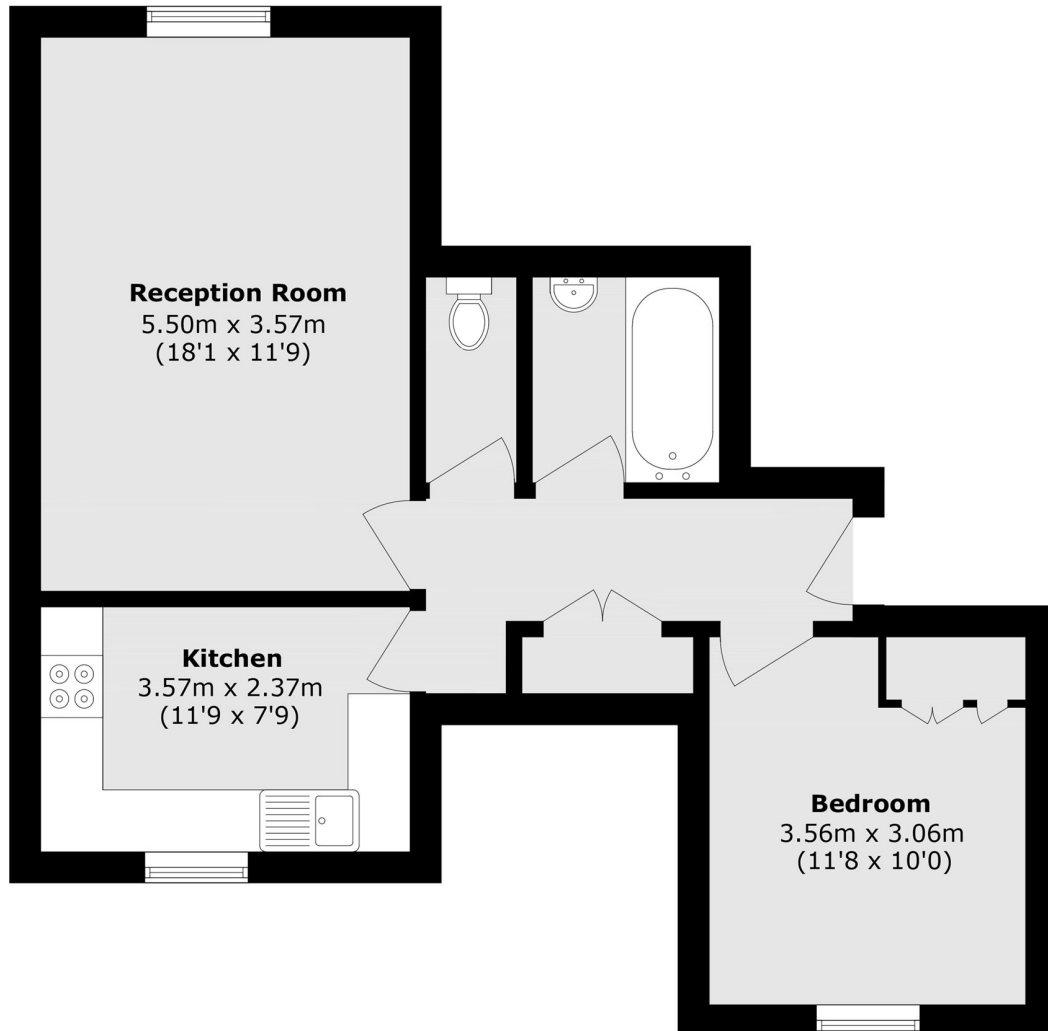
This beautifully redecorated, ground-floor two bedroom apartment is set within a well maintained purpose built development. The property features two spacious double bedrooms, a sleek kitchen equipped with modern, integrated appliances and a bright, airy reception room. Energy Rating: .

The property is situated in within close proximity to local shops, bus stops and popular schools nearby. South Harrow station (Piccadilly line) is approximately 0.4 Miles away.

- Ground Floor Flat • Newly Renovated • Two Double Bedrooms •
- Separate Kitchen • Unfurnished • Central Location •

Colin Dean Residential

in partnership with Dexters



Total area (approx.): 52.5 sq. m (565.1 sq. ft)

Colin Dean Residential
350 Pinner Road,
Harrow, HA1 4LB
020 8515 7929
daniel.murray@colindean.com

Energy Rating: We aim to make our particulars both accurate and reliable. However they are not guaranteed; nor do they form part of an offer or contract. If you require clarification on any points then please contact us, especially if you're travelling some distance to view. Please note that appliances and heating systems have not been tested and therefore no warranties can be given as to their good working order.