

# Colin Dean Residential

in partnership with Dexters



## Stuart Avenue, HA2

£3,500 pcm

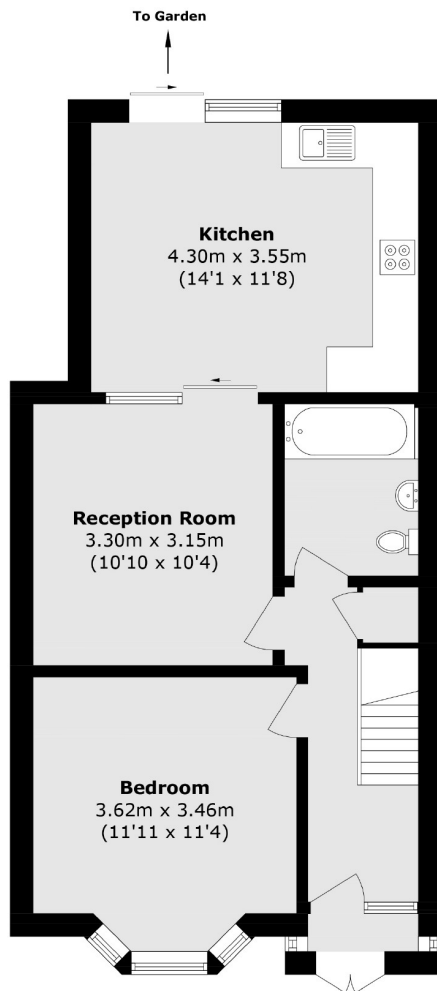
This beautifully presented four bedroom family home offers generous living space throughout and the added benefit of off-street parking. The property features four well proportioned bedrooms, a spacious reception room, and a contemporary kitchen fitted with integrated appliances. The kitchen also provides ample space for dining and entertaining, with sliding doors that lead directly onto a well maintained, private garden. Energy Rating: D.

Located on a quiet residential road, the home is within easy reach of local shops, popular schools, and convenient bus routes. Northolt Park station (Overground) and Rayners Lane station (Piccadilly and Metropolitan Lines) are both approximately one mile away, offering excellent transport links into Central London.

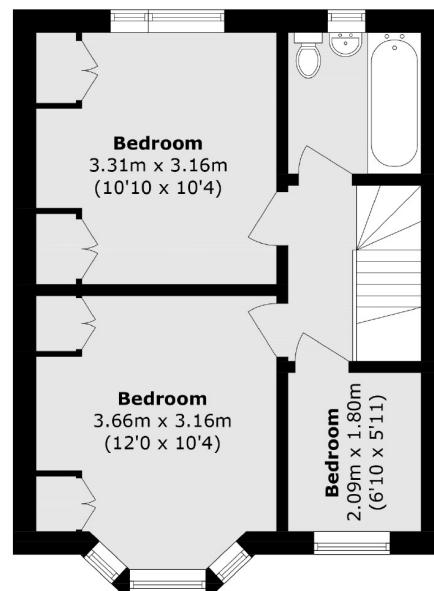
- Terraced House • Four Bedrooms • Two Bathrooms •
- Furnished • Off Street Parking • Private Garden •

# Colin Dean Residential

in partnership with Dexters



**Ground Floor**



**First Floor**

Total area (approx.): 85.2 sq. m (917 sq. ft)

Colin Dean Residential

350 Pinner Road,  
Harrow, HA1 4LB

020 8515 7929

[daniel.murray@colindean.com](mailto:daniel.murray@colindean.com)

Energy Rating: D We aim to make our particulars both accurate and reliable. However they are not guaranteed; nor do they form part of an offer or contract. If you require clarification on any points then please contact us, especially if you're travelling some distance to view. Please note that appliances and heating systems have not been tested and therefore no warranties can be given as to their good working order.