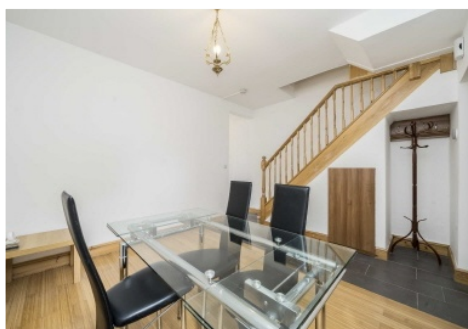


# Colin Dean Residential

in partnership with Dexters



## St. Kildas Road, HA1

£2,800 pcm

Welcome to this charming four double bedroom Mid Terraced House, perfectly situated in the heart of Harrow on the Hill. Spread across three floors, this property offers four generously sized bedrooms, two modern fitted bathrooms, and a large living reception. The separate eat-in kitchen is equipped with modern integrated appliances and opens out onto its own private garden. Energy Rating: D.

This property offers easy access to shopping, dining, entertainment, and outstanding rated schools. Conveniently located 0.3 Miles away from Harrow On The Hill (Metropolitan Line), and 0.1 Mile from two popular Shopping Centres (St Anne's & St. George's).

- Recently Refurbished • Four Double Bedrooms • Two Bathrooms •
- Large Eat-in Kitchen • Private Garden • Central Location •

# Colin Dean Residential

in partnership with Dexters



Total area (approx.): 148.0 sq. m (1,593.0 sq. ft)  
(Excluding Eaves)

Colin Dean Residential  
350 Pinner Road,  
Harrow, HA1 4LB  
020 8515 7929  
[daniel.murray@colindean.com](mailto:daniel.murray@colindean.com)

Energy Rating: D We aim to make our particulars both accurate and reliable. However they are not guaranteed; nor do they form part of an offer or contract. If you require clarification on any points then please contact us, especially if you're travelling some distance to view. Please note that appliances and heating systems have not been tested and therefore no warranties can be given as to their good working order.