

# Colin Dean Residential

in partnership with Dexters



## Cecil Park, HA5

£2,300 pcm

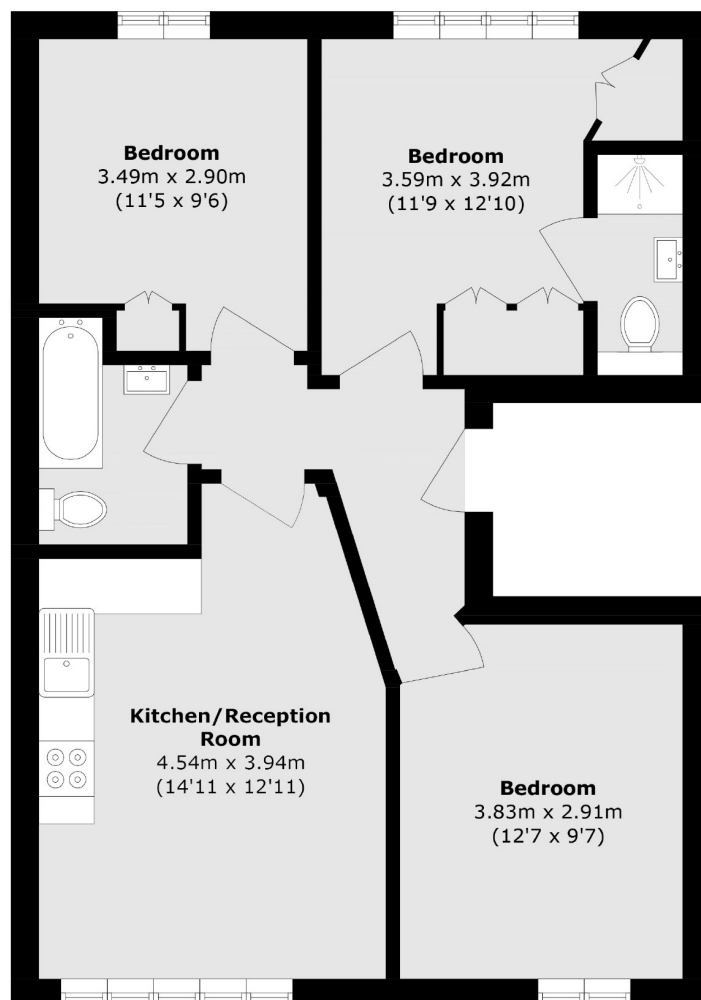
This bright and spacious three bedroom apartment is beautifully presented and located in a sought after residential area. The property offers three generously sized double bedrooms, including a principal bedroom with a modern en-suite, as well as a separate, stylish family bathroom. The contemporary open-plan living reception and dining area features a sleek kitchen, fully equipped with modern integrated appliances. This is the perfect home for a family looking for convenience and modern living. Energy Rating: C.

Conveniently located just 0.2 miles from Pinner Station (Metropolitan Line) and Pinner Village, it offers easy access to an excellent selection of shops, cafés, restaurants, and outstanding-rated schools.

- Three Bedrooms • Two Bathrooms • Modern Interior •
- Open Plan Kitchen • First Floor Flat • Central Location •

# Colin Dean Residential

in partnership with Dexters



Total area (approx.): 64.2 sq. m (691.0 sq. ft)

Colin Dean Residential  
350 Pinner Road,  
Harrow, HA1 4LB  
020 8515 7929  
[daniel.murray@colindean.com](mailto:daniel.murray@colindean.com)

Energy Rating: C We aim to make our particulars both accurate and reliable. However they are not guaranteed; nor do they form part of an offer or contract. If you require clarification on any points then please contact us, especially if you're travelling some distance to view. Please note that appliances and heating systems have not been tested and therefore no warranties can be given as to their good working order.