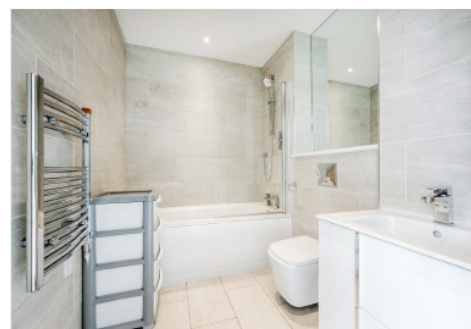
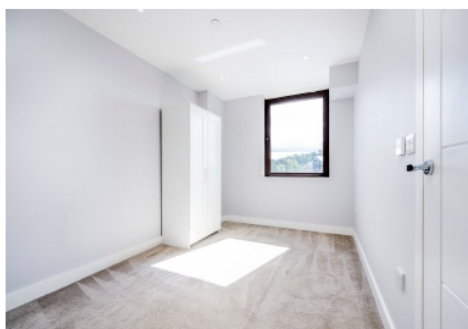
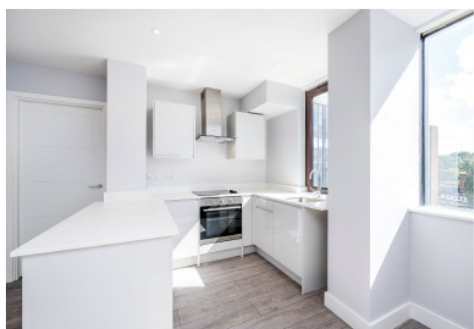


Colin Dean Residential

in partnership with Dexters



Kymberley Road, HA1

£1,800 pcm

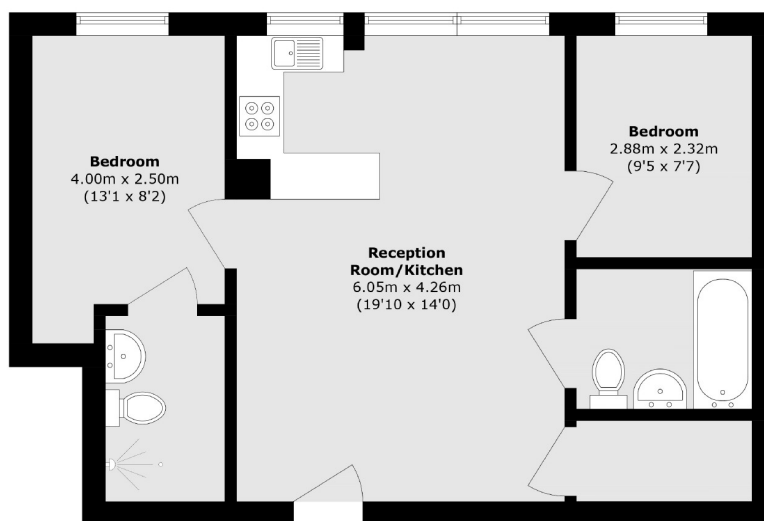
This beautifully presented two bedroom, two bathroom apartment combines modern design with everyday comfort. The property features two double bedrooms, including a master suite with a private en-suite bathroom for added comfort. The contemporary open-plan kitchen is fitted with sleek, integrated appliances and flows seamlessly into a bright and airy living area, perfect for relaxing or entertaining. Energy Rating: C.

This property offers easy access to shopping, dining, entertainment, and outstanding rated schools. Conveniently located 0.1 Miles away from Harrow On The Hill (Metropolitan Line) and two popular Shopping Centres (St Anne's & St. George's).

- Two Double Bedrooms • Two Bathrooms • Modern Interior •
- Fifth Floor (Lift Access) • Open Plan Kitchen • Central Location •

Colin Dean Residential

in partnership with Dexters



Total area (approx.): 54.5 sq. m (586.6 sq. ft)

Colin Dean Residential
350 Pinner Road,
Harrow, HA1 4LB
020 8515 7929
daniel.murray@colindean.com

Energy Rating: C We aim to make our particulars both accurate and reliable. However they are not guaranteed; nor do they form part of an offer or contract. If you require clarification on any points then please contact us, especially if you're travelling some distance to view. Please note that appliances and heating systems have not been tested and therefore no warranties can be given as to their good working order.