

Colin Dean Residential

in partnership with Dexters



Moat Drive, HA1

£4,500 pcm

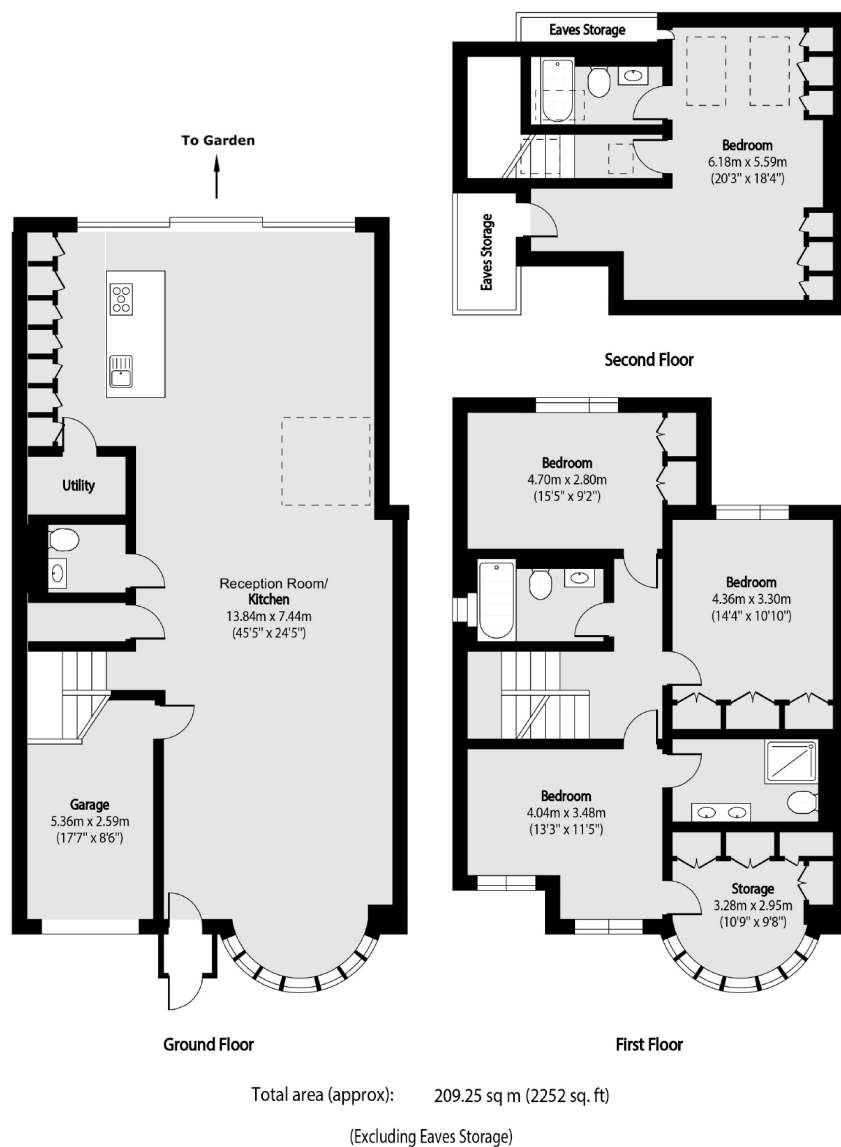
This beautifully renovated four double bedroom, three bathroom family home offers contemporary living across three thoughtfully designed floors. The property boasts a stylish blend of tiled and wooden flooring, complemented with large windows that flood each room with natural light. The modern kitchen is equipped with high-end integrated appliances and bi-folding doors that open seamlessly onto a private garden which leads to a large outbuilding. The property hosts large amounts of storage and a private garden. Energy Rating: D.

This property offers easy access to shopping, dining, entertainment, and outstanding rated schools. Conveniently located 1 Mile away from Harrow On The Hill (Metropolitan Line), and two popular Shopping Centres (St Anne's & St. George's). Harrow and Wealdstone station is 0.8 Miles away, giving you access to Overground and Bakerloo lines.

- Semi Detached House • Four Double Bedrooms • Three Bathrooms •
- Recently Renovated • Private Garden • Off Street Parking •

Colin Dean Residential

in partnership with Dexters



Colin Dean Residential
350 Pinner Road,
Harrow, HA1 4LB
020 8515 7929
daniel.murray@colindean.com

Energy Rating: D We aim to make our particulars both accurate and reliable. However they are not guaranteed; nor do they form part of an offer or contract. If you require clarification on any points then please contact us, especially if you're travelling some distance to view. Please note that appliances and heating systems have not been tested and therefore no warranties can be given as to their good working order.