

Colin Dean Residential

in partnership with Dexters



Uxbridge Road, HA5

£6,604 pcm

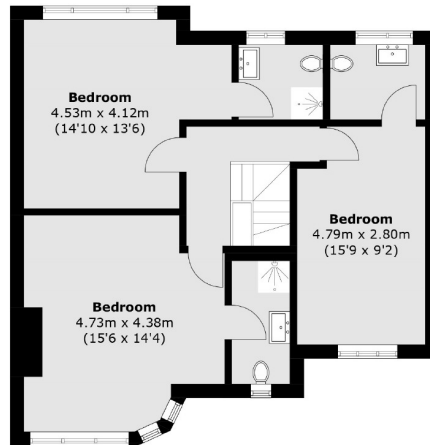
Newly refurbished 6-bedroom HMO offering spacious, modern living. Each room includes a private en-suite bathroom and flat-screen TV. Stylish and modern kitchen. Perfect for professionals and families. Prime location with excellent transport links. Available to move in now. Energy Rating: D.

This property offers easy access to shopping, dining, entertainment, and outstanding rated schools. Conveniently located 0.3 Miles away from Hatch End station.

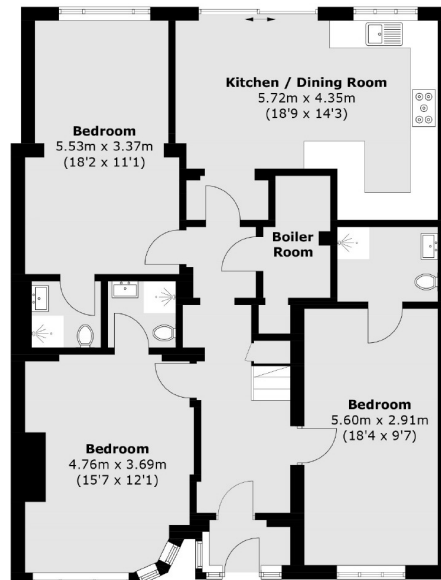
- Newly Refurbished • Off Street Parking • Private Garden •
- Modern Kitchen and bathrooms • En-suite in every room • Flat screen TV in every bedroom •
- Superb Location •

Colin Dean Residential

in partnership with Dexters



First Floor



Ground Floor

Total area (approx.): 173.7 sq. m (1,869.7 sq. ft)

Colin Dean Residential
350 Pinner Road,
Harrow, HA1 4LB
020 8515 7929
daniel.murray@colindean.com

Energy Rating: D We aim to make our particulars both accurate and reliable. However they are not guaranteed; nor do they form part of an offer or contract. If you require clarification on any points then please contact us, especially if you're travelling some distance to view. Please note that appliances and heating systems have not been tested and therefore no warranties can be given as to their good working order.