

# Colin Dean Residential

in partnership with Dexters



## Ryeland Close, UB7

£1,250 pcm

A ground floor studio flat situated in a modern purpose built block on a quiet residential road. This property offers a spacious bedroom/living area, wooden flooring throughout and a separate kitchen with integrated appliances.

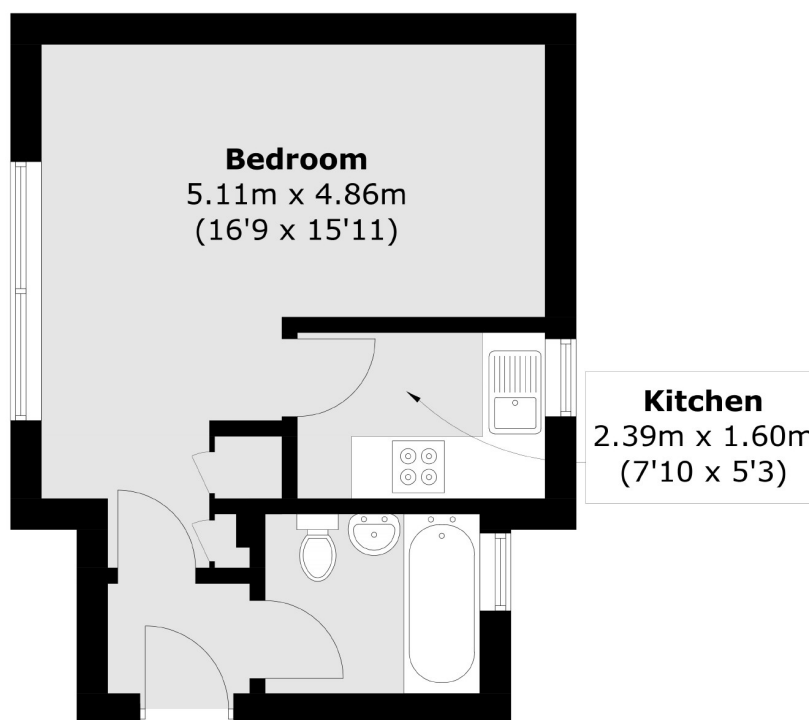
Energy Rating: .

The property is located within 0.9 miles to West Drayton Rail Station (Elizabeth Line) & Stockley Country Park.

- Large Ground Floor Studio • Unfurnished • Wooden Flooring •
- Separate Kitchen • Residents Parking • Communal Gardens •

# Colin Dean Residential

in partnership with Dexters



Total area (approx.): 28.1 sq. m (302.4 sq. ft)

Colin Dean Residential  
350 Pinner Road,  
Harrow, HA1 4LB  
020 8515 7929  
[daniel.murray@colindean.com](mailto:daniel.murray@colindean.com)

Energy Rating: We aim to make our particulars both accurate and reliable. However they are not guaranteed; nor do they form part of an offer or contract. If you require clarification on any points then please contact us, especially if you're travelling some distance to view. Please note that appliances and heating systems have not been tested and therefore no warranties can be given as to their good working order.