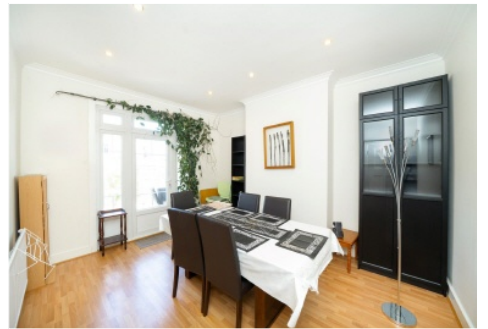


Colin Dean Residential

in partnership with Dexters



Westmorland Road, HA1

£3,000 pcm

This beautiful three bedroom Semi-detached home combines modern comfort with generous living space, making it an ideal choice for families. The ground floor features a bright and spacious reception room, a separate dining area and a sleek, contemporary kitchen equipped with modern integrated appliances. Upstairs, you'll find a family sized bathroom and three well-proportioned bedrooms, each equipped with air conditioning for year round comfort. Energy Rating: D.

The property is situated in a quiet residential street with local shops, bus stops and popular schools nearby. West Harrow station (Metropolitan line) is approximately 0.4 Miles away from this property.

- Semi-Detached Family Home • Three Double Bedrooms • Large Living Room •
- Modern Fitted Kitchen • Private Garden • Off-Street Parking •

Colin Dean Residential

in partnership with Dexters



Total area (approx.): 144.7 sq. m (1,557.6 sq. ft)
(Excluding Eaves)

Colin Dean Residential
350 Pinner Road,
Harrow, HA1 4LB
020 8515 7929
daniel.murray@colindean.com

Energy Rating: D We aim to make our particulars both accurate and reliable. However they are not guaranteed; nor do they form part of an offer or contract. If you require clarification on any points then please contact us, especially if you're travelling some distance to view. Please note that appliances and heating systems have not been tested and therefore no warranties can be given as to their good working order.