

# Colin Dean Residential

in partnership with Dexters



## Hindes Road, HA1

£2,800 pcm

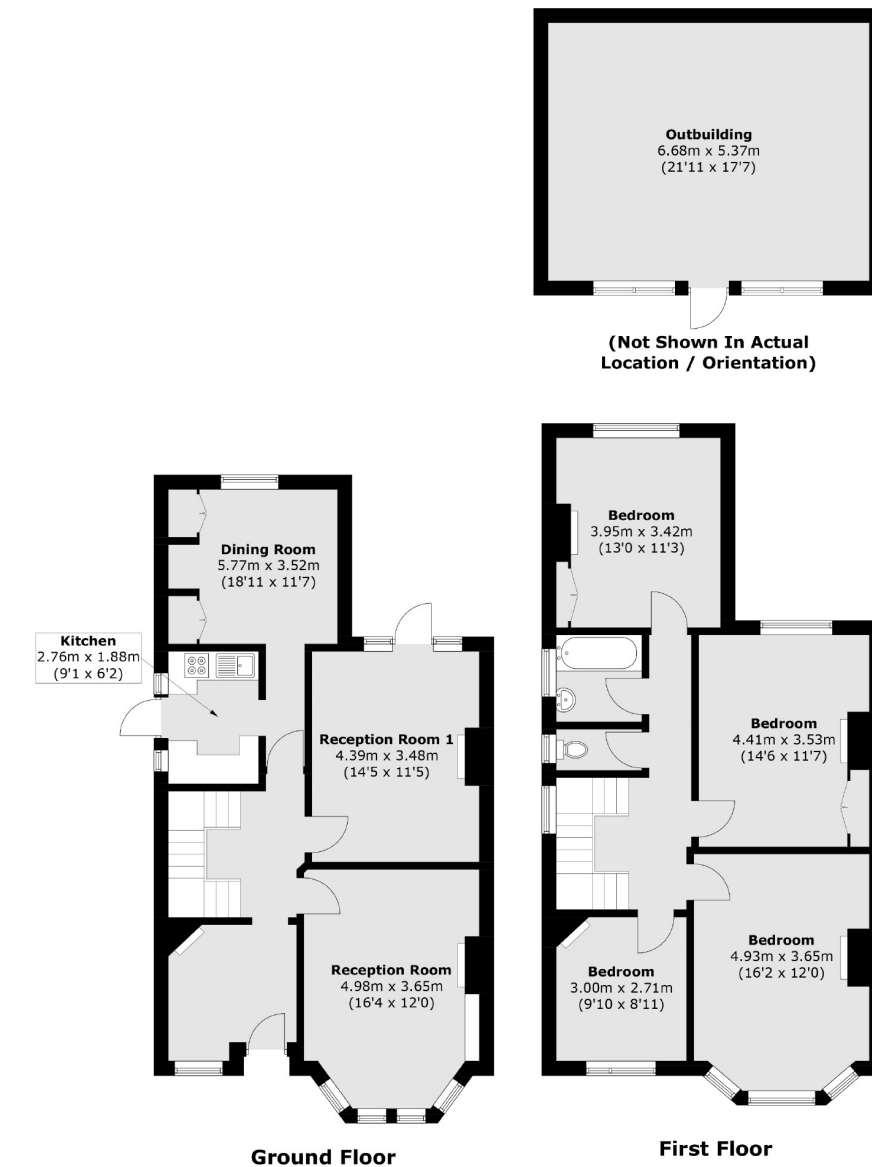
This spacious and well-presented four double bedroom Semi-detached home offers versatile and comfortable living across two floors. Featuring two bright and airy reception rooms, a well-appointed separate kitchen with integrated appliances, and direct access to a beautifully maintained private garden. The home is perfectly designed for families seeking comfort, convenience, and tranquility in a sought-after location. Energy Rating: D.

This property offers easy access to shopping, dining, entertainment, and outstanding rated schools. Conveniently located 0.4 Miles away from Harrow On The Hill (Metropolitan Line), and two popular Shopping Centres (St Anne's & St. George's).

- Semi-Detached House • Four Double Bedrooms • Recently Decorated Throughout •
- Two Living Rooms • Private Garden • Off-Street Parking •

# Colin Dean Residential

in partnership with Dexters



Total area (approx.): 142.3 sq. m (1,531.7 sq. ft)  
Outbuilding: 36.0 sq. m (387.5 sq. ft)

Colin Dean Residential  
350 Pinner Road,  
Harrow, HA1 4LB  
020 8515 7929  
daniel.murray@colindean.com

Energy Rating: D We aim to make our particulars both accurate and reliable. However they are not guaranteed; nor do they form part of an offer or contract. If you require clarification on any points then please contact us, especially if you're travelling some distance to view. Please note that appliances and heating systems have not been tested and therefore no warranties can be given as to their good working order.