

Colin Dean Residential

in partnership with Dexters



Canterbury Road, HA1

£1,700 pcm

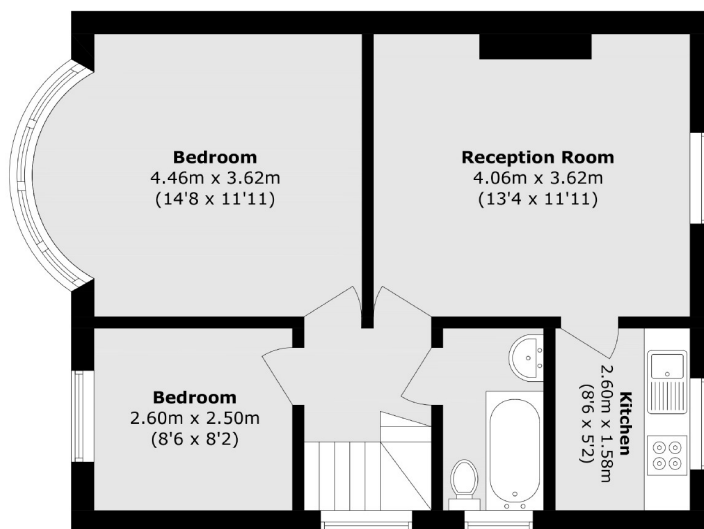
A well presented and contemporary two bedroom maisonette with the added benefit of a private garden. Situated on the first floor, the property features two good sized bedrooms, a bright and spacious reception room and separate kitchen with integrated appliances. Perfect for a professional couple or small family seeking extra space in a desirable location. Energy Rating: C.

The property is situated within close proximity to local shops, bus stops and popular schools nearby. North Harrow station (Metropolitan line) is approximately 0.5 Miles away.

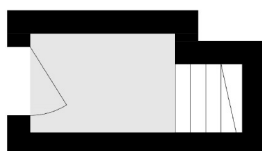
- First Floor Flat • Two Bedrooms • Part-Furnished •
- Large Reception • Private Garden • Central Location •

Colin Dean Residential

in partnership with Dexters



First Floor



Ground Floor

Total area (approx.): 53.6 sq. m (576.9 sq. ft)

Colin Dean Residential
350 Pinner Road,
Harrow, HA1 4LB
020 8515 7929
daniel.murray@colindean.com

Energy Rating: C We aim to make our particulars both accurate and reliable. However they are not guaranteed; nor do they form part of an offer or contract. If you require clarification on any points then please contact us, especially if you're travelling some distance to view. Please note that appliances and heating systems have not been tested and therefore no warranties can be given as to their good working order.