

Colin Dean Residential

in partnership with Dexters



Rickmansworth Road, WD18

£1,700 pcm

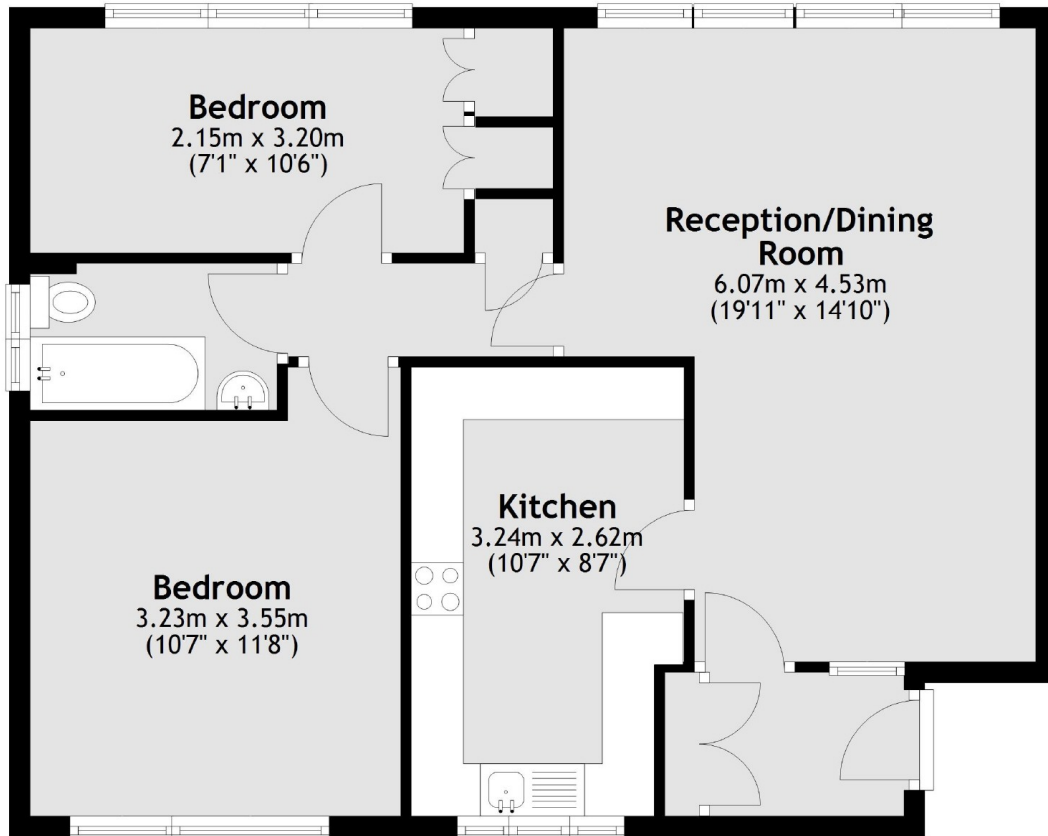
A newly refurbished two double bedroom flat on the second floor overlooking a well maintained communal gardens and West Hertfordshire Sports Ground. The property offers a large living reception, modern bathroom and separate kitchen with modern fitted appliances. There is also residents parking available with this property. Energy Rating: D.

Conveniently located 0.6 Miles from Watford's local town centre where you will find shops and restaurants in abundance. Watford Station (Metropolitan line) is approximately 0.5 Miles away.

- Newly Refurbished • Two Double Bedrooms • Second Floor Flat •
- Communal Gardens • Residents Parking • Central Location •

Colin Dean Residential

in partnership with Dexters



Total area: approx. 62.2 sq. metres (669.4 sq. feet)

Colin Dean Residential
350 Pinner Road,
Harrow, HA1 4LB
020 8515 7929
enquiries@colindean.com

Energy Rating: D We aim to make our particulars both accurate and reliable. However they are not guaranteed; nor do they form part of an offer or contract. If you require clarification on any points then please contact us, especially if you're travelling some distance to view. Please note that appliances and heating systems have not been tested and therefore no warranties can be given as to their good working order.