

Colin Dean Residential

in partnership with Dexters



Wellesley Road, HA1

£1,725 pcm

A well-presented and contemporary two double bedroom maisonette with its own private garden. This property is situated on the first floor and offers two good sized bedrooms, a modern fitted bathroom, wooden flooring in the large open plan living reception and kitchen with modern integrated appliances. This property is perfect for professional sharers and couples in need of additional space.

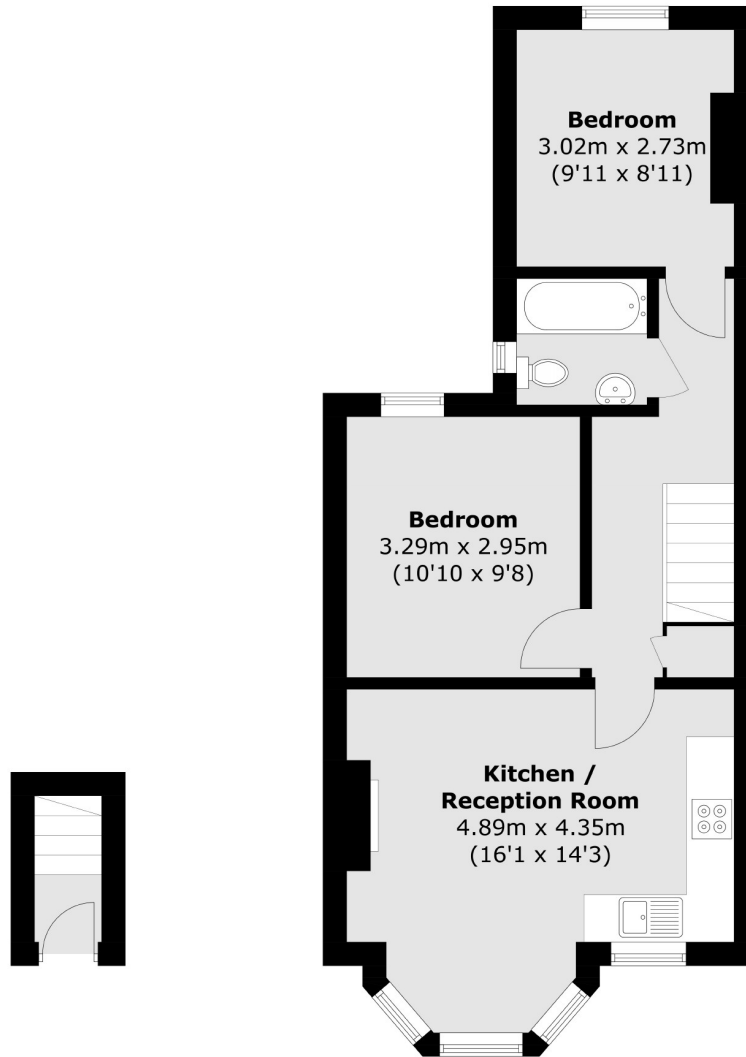
Energy Rating: C.

The property is situated in within close proximity to local shops, bus stops and popular schools nearby. Harrow on the Hill station (Metropolitan line) and St George's Shopping Centre are approximately 0.4 Miles away.

- First Floor Flat • Two Double Bedrooms • Modern Bathroom •
- Unfurnished • Private Garden • Central Location •

Colin Dean Residential

in partnership with Dexters



Ground Floor

First Floor

Total area (approx.): 50.1 sq. m (539.3 sq. ft)

Colin Dean Residential
350 Pinner Road,
Harrow, HA1 4LB
020 8515 7929
enquiries@colindean.com

Energy Rating: C We aim to make our particulars both accurate and reliable. However they are not guaranteed; nor do they form part of an offer or contract. If you require clarification on any points then please contact us, especially if you're travelling some distance to view. Please note that appliances and heating systems have not been tested and therefore no warranties can be given as to their good working order.