

Colin Dean Residential

in partnership with Dexters



Tallack Close, HA3

£3,000 pcm

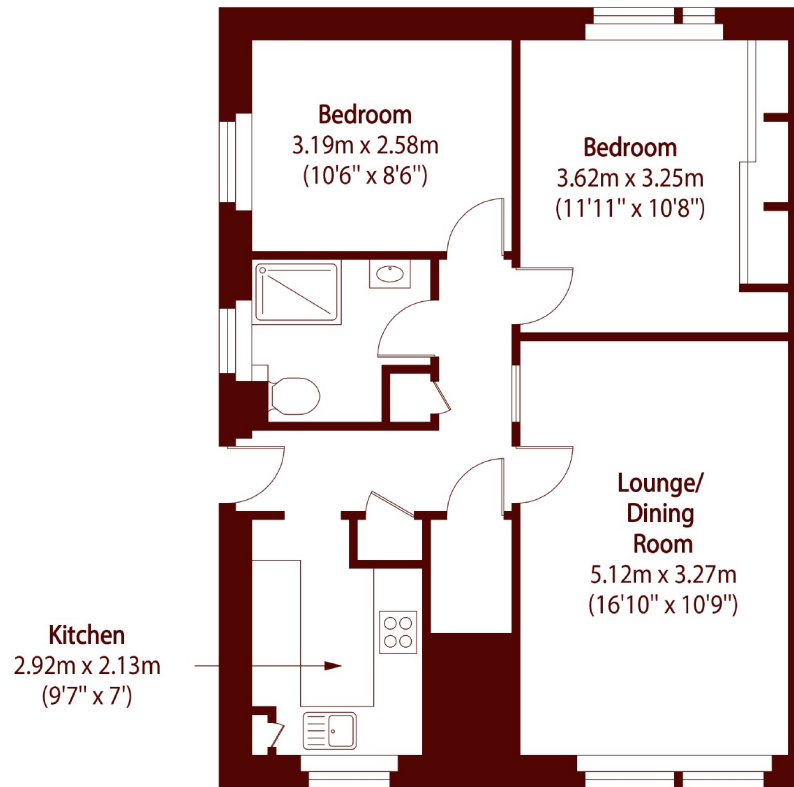
A well presented, ground floor flat set within a terraced house conversion. The property benefits from two double bedrooms, a spacious reception room, separate kitchen with modern appliances and a modernised bathroom. Energy Rating: .

The property is situated in a quiet residential street with local shops, bus stops and popular schools nearby. Harrow and Wealdstone station is just 1 Mile away, giving you access to Overground and Bakerloo lines.

- Ground Floor Flat • Two Double Bedrooms • Separate Kitchen •
- Modern Bathroom • Wooden Flooring • SHORT-LET •

Colin Dean Residential

in partnership with Dexters



Total area (approx): 58.26 sq m (627 sq. ft)

Colin Dean Residential
350 Pinner Road,
Harrow, HA1 4LB
020 8515 7929
enquiries@colindean.com

Energy Rating: We aim to make our particulars both accurate and reliable. However they are not guaranteed; nor do they form part of an offer or contract. If you require clarification on any points then please contact us, especially if you're travelling some distance to view. Please note that appliances and heating systems have not been tested and therefore no warranties can be given as to their good working order.